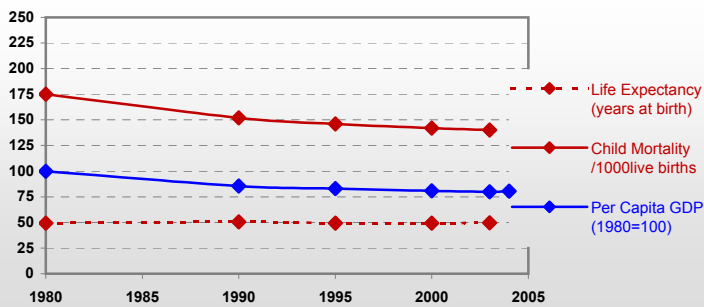


Togo



General / Welfare

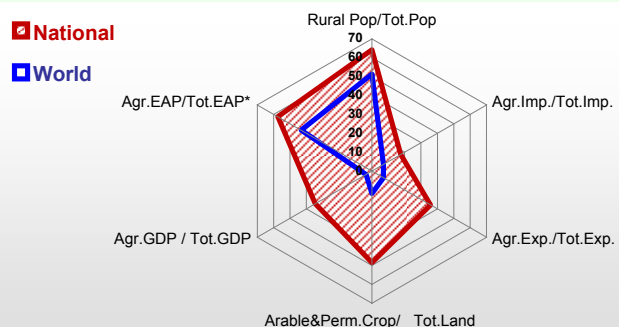
| | |
|--|-------|
| Population ^{04 *} | 5 017 |
| Per Capita GDP ^{04 **} | 291 |
| Agricultural GDP/Ag.Population ^{04**} | 176 |
| Total Exports ^{04 ****} | 556 |
| Total Imports ^{04 ****} | 367 |
| Agric. External Assistance ^{03 ***} | 3 165 |
| Food Consumption Inequality (G) ^{ly} | 0.17 |
| Income Inequality (G) ^{ly} | - |
| Land Inequality (G) ^{ly} | - |
| Undernourished Population % ⁰¹⁻⁰³ | 25 |



* 1000 ** \$ *** 1000 \$ **** Million \$ --- (G) : Gini Coefficient --- GDP at 2000 Constant Prices

Agriculture In The Economy^{ly}

Resources

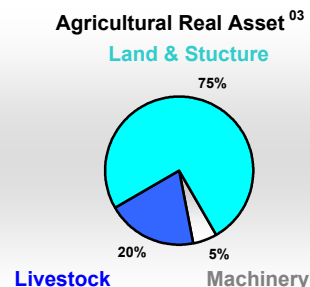
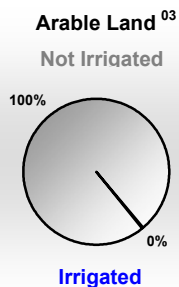
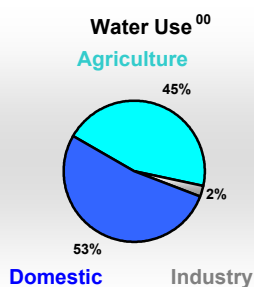
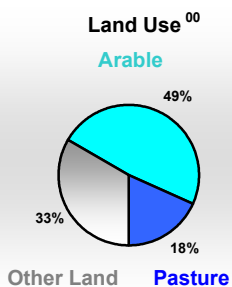


| | |
|---|--------|
| Arable Land ^{00 *} | 2 510 |
| Permanent Crops ^{00 *} | 120 |
| Pasture ^{00 *} | 1 000 |
| Cattle & Buffaloes ^{04 **} | 279 |
| Sheeps & Goats ^{04 **} | 3 330 |
| Tractors ^{03 / *} | 0 |
| Harvesters&Threshers ^{03 / *} | - |
| Fertilizers Production ^{02 ***} | - |
| Fertilizers Consumption ^{02 ***} | 17 055 |
| Rainfall Index ^{02 (mm)} | 1 117 |

* EAP : Economically Active Population ---

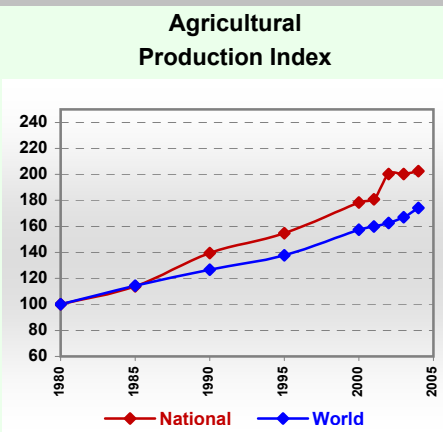
* 1000ha ** 1000heads *** Tonnes N,P₂O₅,K₂O

Resources Distribution



Production

| Agriculture ^{04 *} | | Forestry ⁰⁴ | |
|-----------------------------|-------|---------------------------------|-------|
| Cereals | 787 | Indust.Roundwood ** | 254 |
| Meat | 34 | Wood Fuel ** | 4 424 |
| Fruits & Vegetables | 187 | Wood Charcoal * | 180 |
| Roots & Tubers | 1 324 | Sawn Wood ** | 13 |
| Pulses | 50 | Wood Based Panels ** | - |
| Oilseeds (oil equiv.) | 47 | Wood Pulp * | - |
| Sugar Crops | - | Paper, Paper Board * | - |
| Milk | 9 | Fisheries^{04 *} | |
| Eggs | 6 | Pelagic | 17 |
| Stimulants | 22 | Freshwater | 9 |
| Tobacco | 2 | Demersal | 2 |
| Fiber Crops | 76 | Molluscs | - |



* 1000Tonnes ** 1000m³

Togo

Trade ⁰⁴

| | |
|--------------------------------|-----|
| Agricultural Imports * | 98 |
| % 4 Major Imports in Agr. Imp. | 59 |
| % Agr. Imports in Tot. Imports | 18 |
| Fishery Imports * | 5 |
| Forestry Imports * | 4 |
| Agricultural Exports * | 131 |
| % 4 Major Exports in Agr. Exp. | 71 |
| % Agr. Exports in Tot.Exports | 36 |
| Fishery Exports * | 10 |
| Forestry Exports * | 1 |



* Million \$

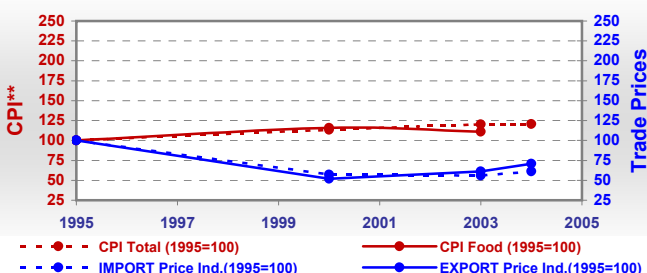
Trade Partners & Products

| | | | |
|------------------------------|--------------|-------------|---------------|
| Major Import Partner | Burkina Faso | France | Benin |
| Major Exports Partner | Benin | China | Netherlands |
| Major Imports | Wheat | Cigarettes | Karite nuts |
| Major Exports | Cotton lint | Cocoa beans | Cotton carded |

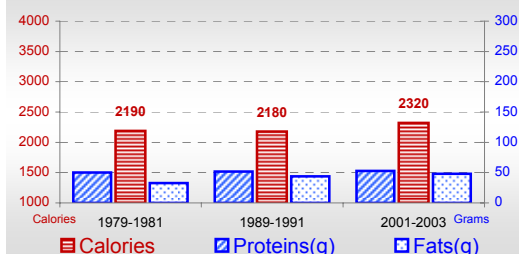
Prices

| Producer Prices ⁰¹⁻⁰³ | \$* | \$Green * |
|----------------------------------|-------|-----------|
| Wheat | - | - |
| Rice | 197 | 252 |
| Maize | 148 | 188 |
| Soybean | - | - |
| Coffee | 421 | 539 |
| Tobacco | 621 | 790 |
| Cow Milk | 598 | 760 |
| Cattle (Live Weight) | 629 | 802 |
| Pig (Live Weight) | 999 | 1 272 |
| Chicken (Live Weight) | 2 010 | 2 559 |

Consumer and Agricultural Trade Price Indices



Per Capita Daily Consumption

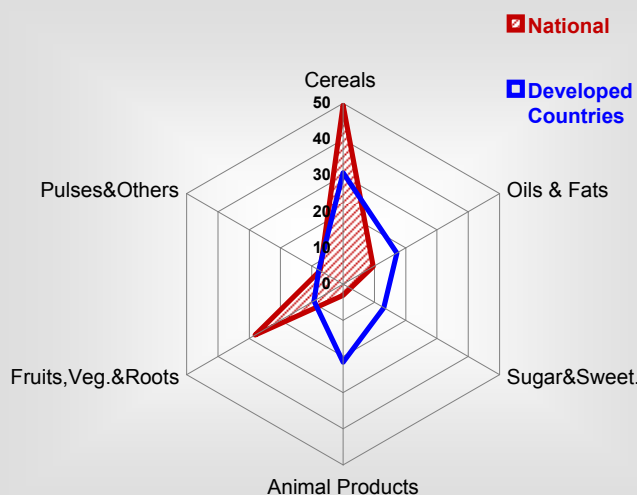


Per Capita Daily Calorie Intake From Selected Food Items ⁰¹⁻⁰³

| | |
|-----------------------|-----|
| Rice | 191 |
| Wheat | 144 |
| Maize | 583 |
| Sorghum | 173 |
| Potatoes | 1 |
| Cassava | 374 |
| Sugar | 53 |
| Soybean Oil | 2 |
| Palm Oil | 115 |
| Milk | 10 |
| Anim.Fats(Raw&Butter) | 4 |
| Eggs | 3 |
| Pigmeat | 9 |
| Poultry Meat | 13 |
| Bovine Meat | 7 |
| Sheep & Goats Meat | 7 |

Consumption

Source of Dietary Energy Consumption % ⁰¹⁻⁰³



Food Balance ^{01-03 (1000Tonnes)}

| Food Groups | Production (+) | Exports (-) | Imports (+) | Stock changes & Other uses (-) | Consumption (=) |
|-------------|----------------|-------------|-------------|--------------------------------|-----------------|
| Cereals | 756 | 60 | 213 | 244 | 664 |
| Veg.oils | 26 | 14 | 47 | 14 | 44 |
| Sugar&Sw. | - | 6 | 31 | 0 | 25 |
| Roots&Tub. | 1 297 | 1 | 2 | 260 | 1 039 |
| Meat | 33 | 1 | 9 | 0 | 41 |
| Milk | 9 | 14 | 29 | 0 | 24 |