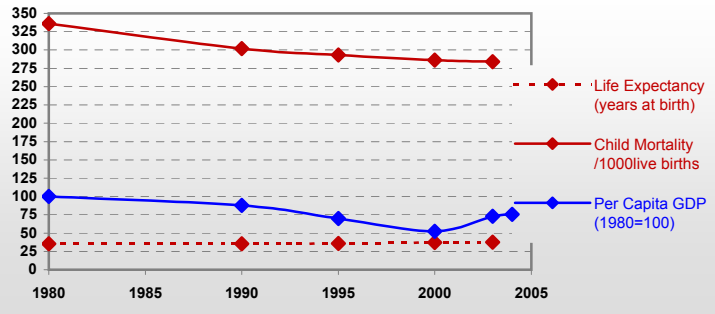


Sierra Leone

General / Welfare

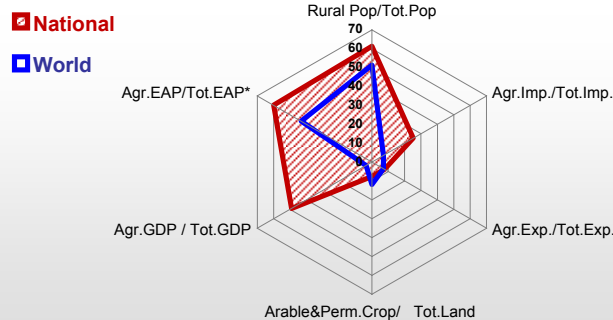
Population ^{04 *}	5 168
Per Capita GDP ^{04 **}	217
Agricultural GDP/Ag.Population ^{04**}	177
Total Exports ^{04 ****}	607
Total Imports ^{04 ****}	180
Agric. External Assistance ^{03 ***}	28 185
Food Consumption Inequality (G) ^{ly}	0.18
Income Inequality (G) ^{ly}	0.63
Land Inequality (G) ^{ly}	-
Undernourished Population % ⁰¹⁻⁰³	50



* 1000 ** \$ *** 1000 \$ **** Million \$ --- (G) : Gini Coefficient --- GDP at 2000 Constant Prices

Agriculture In The Economy^{ly}

Resources

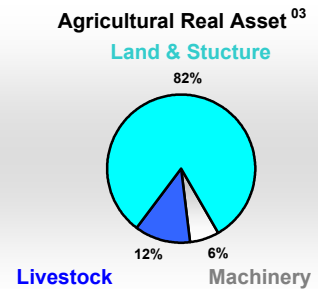
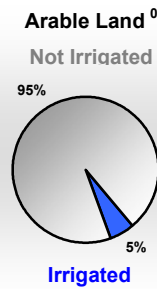
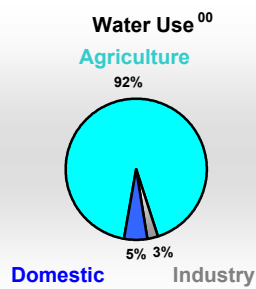
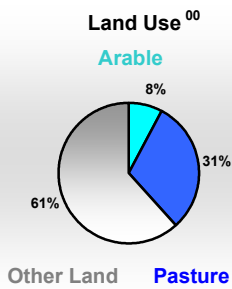


Arable Land ^{00 *}	490
Permanent Crops ^{00 *}	60
Pasture ^{00 *}	2 200
Cattle & Buffaloes ^{04 **}	400
Sheeps & Goats ^{04 **}	595
Tractors ^{03 / *}	0
Harvesters&Threshers ^{03 / *}	0
Fertilizers Production ^{02 ***}	-
Fertilizers Consumption ^{02 ***}	300
Rainfall Index ^{02 (mm)}	2 546

* EAP : Economically Active Population

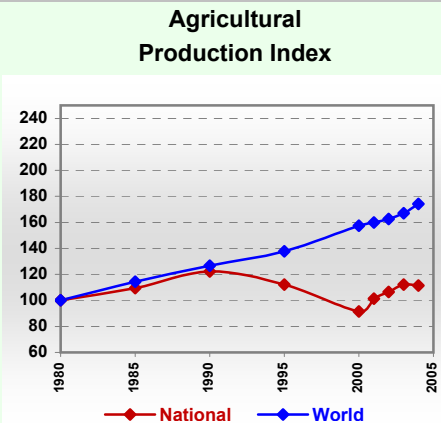
* 1000ha ** 1000heads *** Tonnes N,P₂O₅,K₂O

Resources Distribution



Production

Agriculture ^{04 *}		Forestry ⁰⁴	
Cereals	309	Indust.Roundwood **	124
Meat	23	Wood Fuel **	5 403
Fruits & Vegetables	420	Wood Charcoal *	328
Roots & Tubers	418	Sawn Wood **	5
Pulses	59	Wood Based Panels **	-
Oilseeds (oil equiv.)	56	Wood Pulp *	-
Sugar Crops	70	Paper, Paper Board *	-
Milk	21	Fisheries^{04 *}	
Eggs	8	Pelagic	78
Stimulants	29	Freshwater	17
Tobacco	0	Demersal	26
Fiber Crops	5	Molluscs	1



* 1000Tonnes ** 1000m³

Time reference=⁹⁹⁻⁰¹:1999-2001, ⁰⁰:2000, ⁰²:2002, ⁰⁰⁻⁰²:2000-2002, ⁰³:2003, ⁰⁴:2004, ^{ly}:Latest Available Year

Sierra Leone

Trade ⁰⁴

Agricultural Imports *	153
% 4 Major Imports in Agr. Imp.	40
% Agr. Imports in Tot. Imports	25
Fishery Imports *	2
Forestry Imports *	5
Agricultural Exports *	14
% 4 Major Exports in Agr. Exp.	88
% Agr. Exports in Tot.Exports	8
Fishery Exports *	11
Forestry Exports *	1

* Million \$



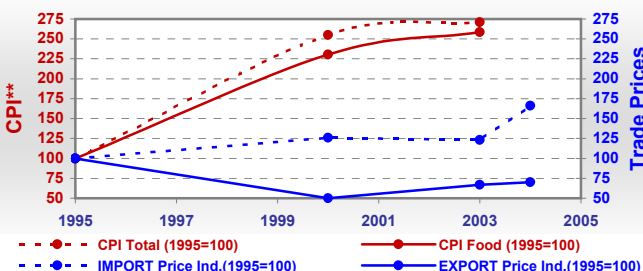
Trade Partners & Products

Major Import Partner	-	-	-
Major Exports Partner	-	-	-
Major Imports	Coffee, husk	Cigarettes	Food prepared
Major Exports	Cocoa beans	Cigarettes	Coffee, green

Prices

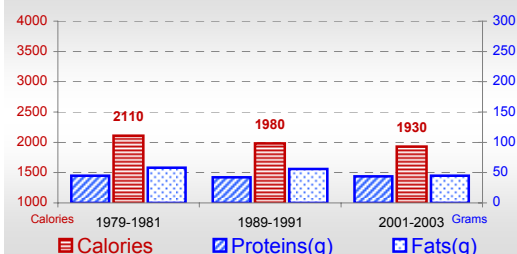
Producer Prices ⁰¹⁻⁰³	\$*	\$Green *
Wheat	-	-
Rice	-	-
Maize	-	-
Soybean	-	-
Coffee	-	-
Tobacco	-	-
Cow Milk	-	-
Cattle (Live Weight)	-	-
Pig (Live Weight)	-	-
Chicken (Live Weight)	-	-

Consumer and Agricultural Trade Price Indices



Consumption

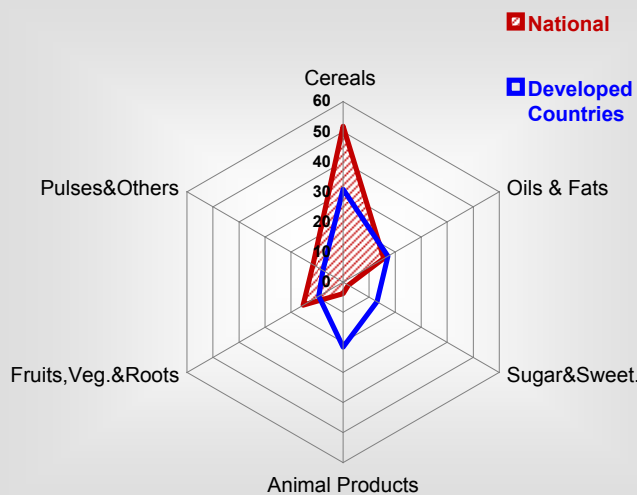
Per Capita Daily Consumption



Per Capita Daily Calorie Intake From Selected Food Items ⁰¹⁻⁰³

Rice	784
Wheat	129
Maize	33
Sorghum	23
Potatoes	1
Cassava	212
Sugar	38
Soybean Oil	19
Palm Oil	196
Milk	12
Anim.Fats(Raw&Butter)	2
Eggs	6
Pigmeat	5
Poultry Meat	8
Bovine Meat	6
Sheep & Goats Meat	1

Source of Dietary Energy Consumption % ⁰¹⁻⁰³



Food Balance ^{01-03 (1000Tonnes)}

Food Groups	Production (+)	Exports (-)	Imports (+)	Stock changes & Other uses (-)	Consumption (=)
Cereals	207	-	263	-35	506
Veg.oils	48	-	13	2	59
Sugar&Sw.	3	-	18	0	20
Roots&Tub.	367	2	2	3	364
Meat	23	-	6	0	29
Milk	21	-	16	1	36