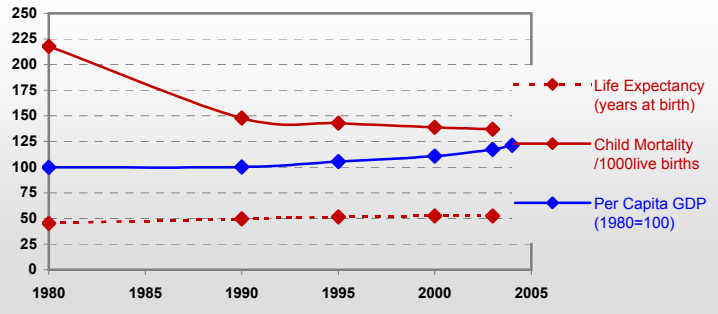


# Senegal



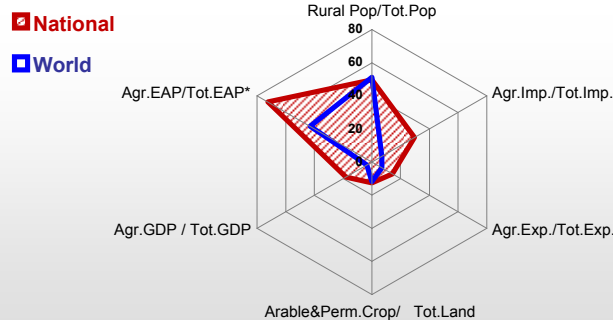
## General / Welfare

Population <sup>04 *</sup>	10 339
Per Capita GDP <sup>04 **</sup>	509
Agricultural GDP/Ag.Population <sup>04**</sup>	126
Total Exports <sup>04 ****</sup>	2 860
Total Imports <sup>04 ****</sup>	1 270
Agric. External Assistance <sup>03 ***</sup>	105 418
Food Consumption Inequality (G) <sup>ly</sup>	0.15
Income Inequality (G) <sup>ly</sup>	0.41
Land Inequality (G) <sup>ly</sup>	0.50
Undernourished Population % <sup>01-03</sup>	23



\* 1000 \*\* \$ \*\*\* 1000 \$ \*\*\*\* Million \$ --- (G): Gini Coefficient --- GDP at 2000 Constant Prices

## Agriculture In The Economy<sup>ly</sup>



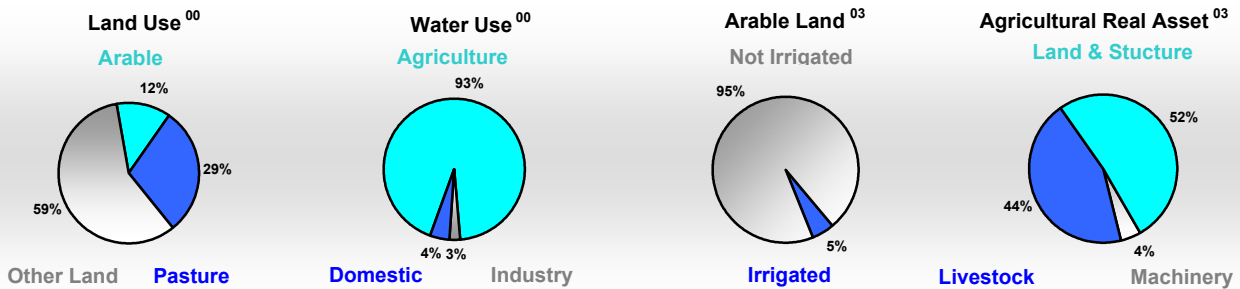
\* EAP : Economically Active Population

## Resources

Arable Land <sup>00 *</sup>	2 355
Permanent Crops <sup>00 *</sup>	45
Pasture <sup>00 *</sup>	5 650
Cattle & Buffaloes <sup>04 **</sup>	3 100
Sheeps & Goats <sup>04 **</sup>	8 764
Tractors <sup>03 / *</sup>	0
Harvesters&Threshers <sup>03 / *</sup>	0
Fertilizers Production <sup>02 ***</sup>	62 700
Fertilizers Consumption <sup>02 ***</sup>	33 491
Rainfall Index <sup>02 (mm)</sup>	576

\* 1000ha \*\* 1000heads \*\*\* Tonnes N,P<sub>2</sub>O<sub>5</sub>,K<sub>2</sub>O

## Resources Distribution

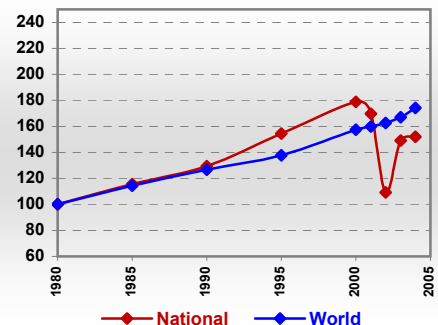


## Production

Agriculture <sup>04 *</sup>		Forestry <sup>04</sup>	
Cereals	1 085	Indust.Roundwood **	794
Meat	167	Wood Fuel **	5 243
Fruits & Vegetables	584	Wood Charcoal *	110
Roots & Tubers	410	Sawn Wood **	23
Pulses	12	Wood Based Panels **	-
Oilseeds (oil equiv.)	211	Wood Pulp *	-
Sugar Crops	850	Paper, Paper Board *	-
Milk	129	<b>Fisheries<sup>04 *</sup></b>	
Eggs	34	Pelagic	306
Stimulants	-	Freshwater	52
Tobacco	-	Demersal	66
Fiber Crops	22	Molluscs	9

\* 1000Tonnes \*\* 1000m<sup>3</sup>

## Agricultural Production Index



# Senegal

## Trade <sup>04</sup>

Agricultural Imports *	847
% 4 Major Imports in Agr. Imp.	49
% Agr. Imports in Tot. Imports	30
Fishery Imports *	1
Forestry Imports *	53
Agricultural Exports *	182
% 4 Major Exports in Agr. Exp.	57
% Agr. Exports in Tot.Exports	14
Fishery Exports *	316
Forestry Exports *	2



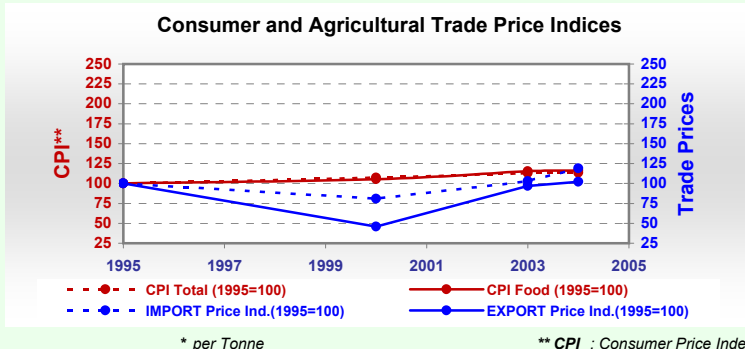
\* Million \$

### Trade Partners & Products

Major Import Partner	France	Thailand	Brazil
Major Exports Partner	Italy	France	Spain
Major Imports	Rice, broken	Wheat	Cow milk, dry
Major Exports	Cotton lint	Oil, groundnut	Food prepared

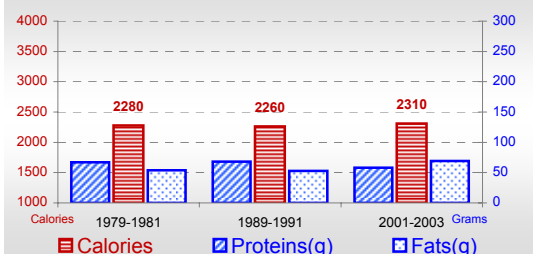
## Prices

Producer Prices <sup>01-03</sup>	\$*	\$Green *
Wheat	-	-
Rice	-	-
Maize	-	-
Soybean	-	-
Coffee	-	-
Tobacco	-	-
Cow Milk	-	-
Cattle (Live Weight)	-	-
Pig (Live Weight)	-	-
Chicken (Live Weight)	-	-

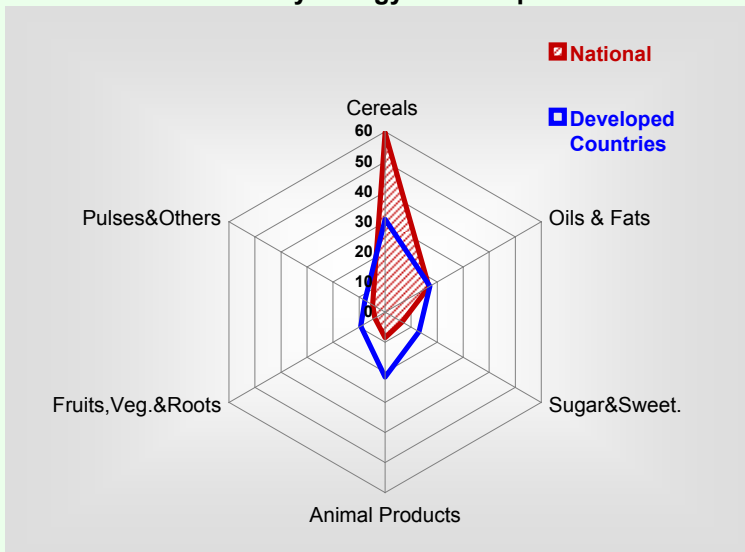


## Consumption

### Per Capita Daily Consumption



### Source of Dietary Energy Consumption % <sup>01-03</sup>



### Per Capita Daily Calorie Intake From Selected Food Items <sup>01-03</sup>

Rice	732
Wheat	220
Maize	93
Sorghum	96
Potatoes	7
Cassava	37
Sugar	143
Soybean Oil	174
Palm Oil	48
Milk	47
Anim.Fats(Raw&Butter)	15
Eggs	9
Pigmeat	9
Poultry Meat	25
Bovine Meat	25
Sheep & Goats Meat	16

### Food Balance <sup>01-03 (1000Tonnes)</sup>

Food Groups	Production (+)	Exports (-)	Imports (+)	Stock changes & Other uses (-)	Consumption (=)
Cereals	994	15	1 191	568	1 602
Veg.oils	188	79	113	70	152
Sugar&Sw.	94	1	60	0	153
Roots&Tub.	150	-	33	27	157
Meat	165	-	10	0	174
Milk	125	17	143	-6	256