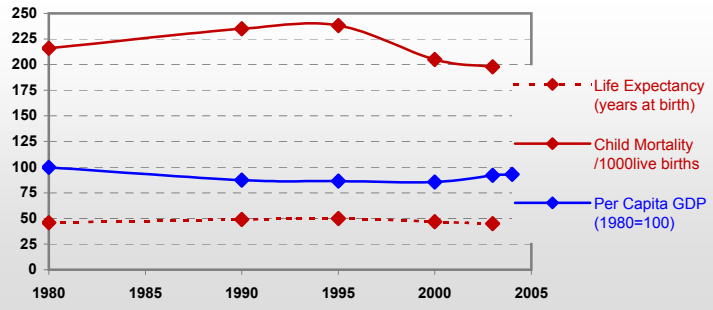


Nigeria



General / Welfare

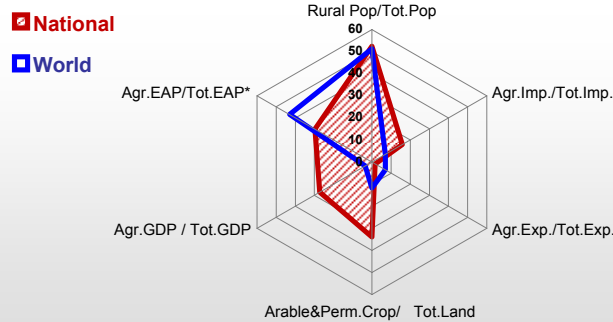
Population ^{04 *}	127 117
Per Capita GDP ^{04 **}	397
Agricultural GDP/Ag.Population ^{04**}	364
Total Exports ^{04 ****}	14 164
Total Imports ^{04 ****}	31 148
Agric. External Assistance ^{03 ***}	169 793
Food Consumption Inequality (G) ^{ly}	0.16
Income Inequality (G) ^{ly}	0.51
Land Inequality (G) ^{ly}	-
Undernourished Population % ⁰¹⁻⁰³	9



* 1000 ** \$ *** 1000 \$ **** Million \$ --- (G) : Gini Coefficient --- GDP at 2000 Constant Prices

Agriculture In The Economy^{ly}

Resources

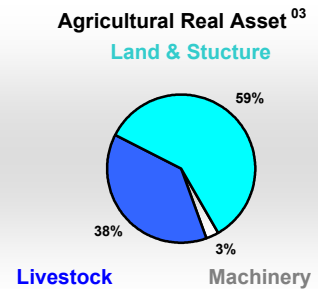
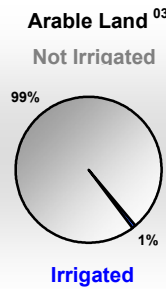
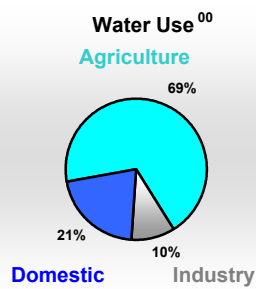
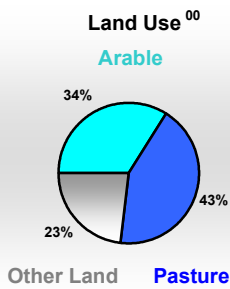


Arable Land ^{00 *}	28 200
Permanent Crops ^{00 *}	2 650
Pasture ^{00 *}	39 200
Cattle & Buffaloes ^{04 **}	15 200
Sheeps & Goats ^{04 **}	51 000
Tractors ^{03 / *}	1
Harvesters&Threshers ^{03 / *}	-
Fertilizers Production ^{02 ***}	-
Fertilizers Consumption ^{02 ***}	166 200
Rainfall Index ^{02 (mm)}	1 324

* EAP : Economically Active Population ---

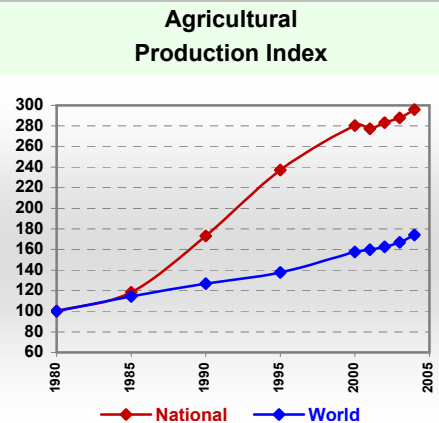
* 1000ha ** 1000heads *** Tonnes N,P₂O₅,K₂O

Resources Distribution



Production

Agriculture ^{04 *}		Forestry ⁰⁴	
Cereals	22 783	Indust.Roundwood **	9 418
Meat	1 067	Wood Fuel **	60 852
Fruits & Vegetables	17 397	Wood Charcoal *	3 421
Roots & Tubers	71 966	Sawn Wood **	2 000
Pulses	2 367	Wood Based Panels **	95
Oilseeds (oil equiv.)	2 688	Wood Pulp *	23
Sugar Crops	776	Paper, Paper Board *	19
Milk	432	Fisheries^{04 *}	
Eggs	476	Pelagic	115
Stimulants	370	Freshwater	226
Tobacco	9	Demersal	111
Fiber Crops	141	Molluscs	3



* 1000Tonnes ** 1000m³

Time reference=⁹⁹⁻⁰¹:1999-2001, ⁰⁰:2000, ⁰²:2002, ⁰⁰⁻⁰²:2000-2002, ⁰³:2003, ⁰⁴:2004, ^{ly}:Latest Available Year

Nigeria

Trade ⁰⁴

Agricultural Imports *	2 264
% 4 Major Imports in Agr. Imp.	51
% Agr. Imports in Tot. Imports	16
Fishery Imports *	397
Forestry Imports *	241
Agricultural Exports *	487
% 4 Major Exports in Agr. Exp.	81
% Agr. Exports in Tot.Exports	2
Fishery Exports *	30
Forestry Exports *	33



* Million \$

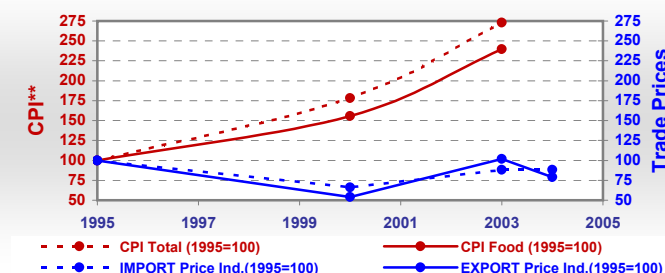
Trade Partners & Products

Major Import Partner	-	-	-
Major Exports Partner	-	-	-
Major Imports	Wheat	Rice	Cow milk, dry
Major Exports	Cocoa beans	Rubber, dry	Cocoa butter

Prices

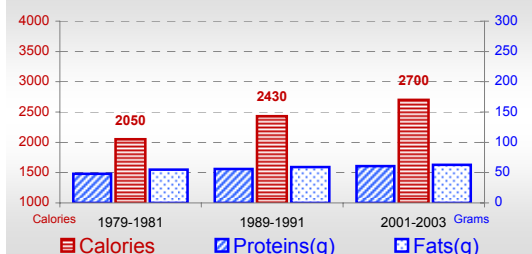
Producer Prices ⁰¹⁻⁰³	\$*	\$Green *
Wheat	470	239
Rice	519	263
Maize	368	186
Soybean	391	198
Coffee	1 626	828
Tobacco	4 751	2 426
Cow Milk	399	203
Cattle (Live Weight)	1 763	894
Pig (Live Weight)	820	415
Chicken (Live Weight)	2 789	1 419

Consumer and Agricultural Trade Price Indices



Consumption

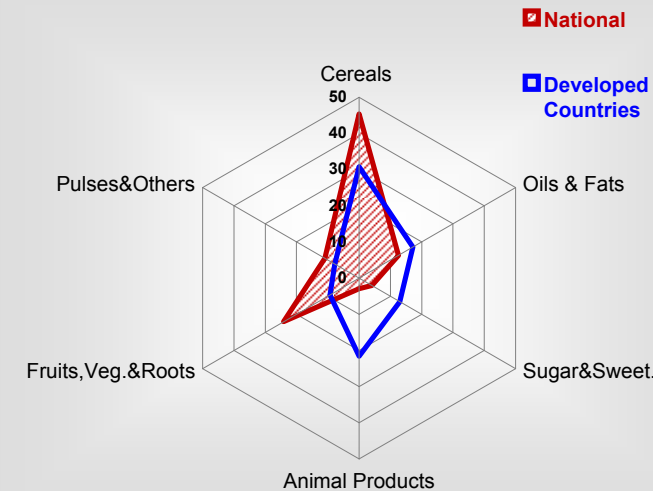
Per Capita Daily Consumption



Per Capita Daily Calorie Intake From Selected Food Items ⁰¹⁻⁰³

Rice	271
Wheat	132
Maize	180
Sorghum	351
Potatoes	6
Cassava	253
Sugar	107
Soybean Oil	1
Palm Oil	146
Milk	11
Anim.Fats(Raw&Butter)	7
Eggs	11
Pigmeat	14
Poultry Meat	4
Bovine Meat	12
Sheep & Goats Meat	7

Source of Dietary Energy Consumption % ⁰¹⁻⁰³



Food Balance ^{01-03 (1000Tonnes)}

Food Groups	Production (+)	Exports (-)	Imports (+)	Stock changes & Other uses (-)	Consumption (=)
Cereals	20 482	61	3 940	6 731	17 630
Veg.oils	1 874	17	192	362	1 687
Sugar&Sw.	54	8	1 321	0	1 366
Roots&Tub.	65 929	8	1	39 772	26 150
Meat	1 022	-	5	0	1 026
Milk	432	5	578	109	896