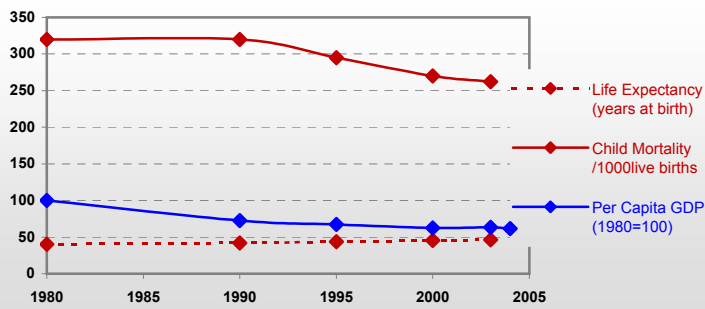


# Niger

## General / Welfare

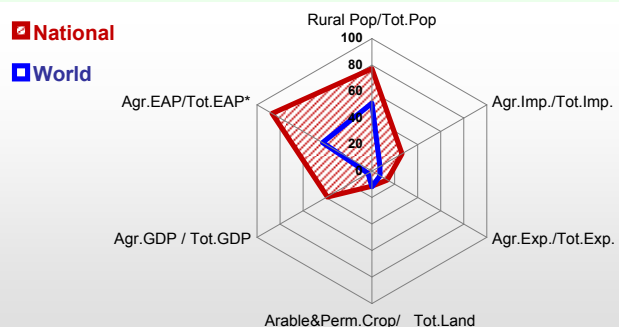
|  |        |
|--|--------|
| Population <sup>04 *</sup>                     | 12 415 |
| Per Capita GDP <sup>04 **</sup>                | 170    |
| Agricultural GDP/Ag.Population <sup>04**</sup> | 76     |
| Total Exports <sup>04 ****</sup>               | 521    |
| Total Imports <sup>04 ****</sup>               | 206    |
| Agric. External Assistance <sup>03 ***</sup>   | 79 254 |
| Food Consumption Inequality (G) <sup>ly</sup>  | 0.19   |
| Income Inequality (G) <sup>ly</sup>            | 0.51   |
| Land Inequality (G) <sup>ly</sup>              | -      |
| Undernourished Population % <sup>01-03</sup>   | 32     |



\* 1000 \*\* \$ \*\*\* 1000 \$ \*\*\*\* Million \$ --- (G): Gini Coefficient --- GDP at 2000 Constant Prices

## Agriculture In The Economy<sup>ly</sup>

## Resources

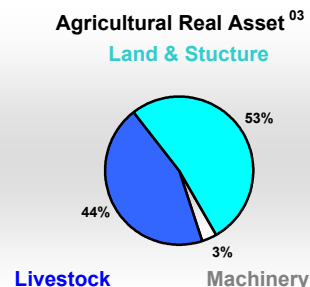
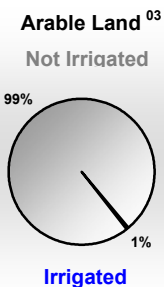
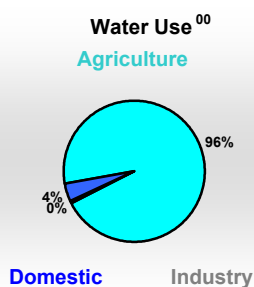
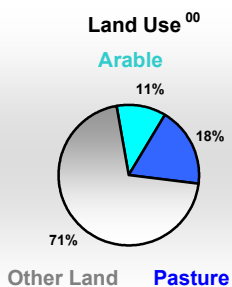


|   |        |
|---|--------|
| Arable Land <sup>00 *</sup>               | 14 483 |
| Permanent Crops <sup>00 *</sup>           | 17     |
| Pasture <sup>00 *</sup>                   | 23 000 |
| Cattle & Buffaloes <sup>04 **</sup>       | 2 260  |
| Sheeps & Goats <sup>04 **</sup>           | 11 400 |
| Tractors <sup>03 / *</sup>                | 0      |
| Harvesters&Threshers <sup>03 / *</sup>    | -      |
| Fertilizers Production <sup>02 ***</sup>  | -      |
| Fertilizers Consumption <sup>02 ***</sup> | 4 970  |
| Rainfall Index <sup>02 (mm)</sup>         | 301    |

\* EAP : Economically Active Population

\* 1000ha \*\* 1000heads \*\*\* Tonnes N,P<sub>2</sub>O<sub>5</sub>,K<sub>2</sub>O

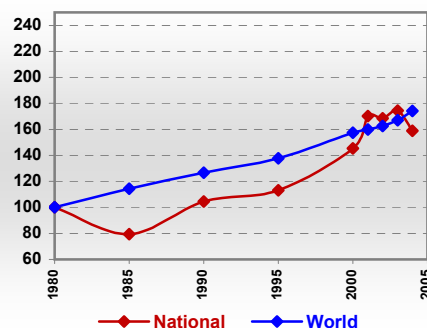
## Resources Distribution



## Production

| Agriculture <sup>04 *</sup> |       | Forestry <sup>04</sup>          |       |
|-----------------------------|-------|---------------------------------|-------|
| Cereals                     | 2 672 | Indust.Roundwood **             | 411   |
| Meat                        | 133   | Wood Fuel **                    | 8 596 |
| Fruits & Vegetables         | 696   | Wood Charcoal *                 | 483   |
| Roots & Tubers              | 134   | Sawn Wood **                    | 4     |
| Pulses                      | 572   | Wood Based Panels **            | -     |
| Oilseeds (oil equiv.)       | 43    | Wood Pulp *                     | -     |
| Sugar Crops                 | 220   | Paper, Paper Board *            | -     |
| Milk                        | 315   | <b>Fisheries<sup>04 *</sup></b> |       |
| Eggs                        | 11    | Pelagic                         | -     |
| Stimulants                  | -     | Freshwater                      | 52    |
| Tobacco                     | 1     | Demersal                        | -     |
| Fiber Crops                 | 1     | Molluscs                        | -     |

## Agricultural Production Index



\* 1000Tonnes \*\* 1000m<sup>3</sup>

# Niger

## Trade <sup>04</sup>

|                                |     |
|--------------------------------|-----|
| Agricultural Imports *         | 136 |
| % 4 Major Imports in Agr. Imp. | 50  |
| % Agr. Imports in Tot. Imports | 26  |
| Fishery Imports *              | 1   |
| Forestry Imports *             | 8   |
| Agricultural Exports *         | 27  |
| % 4 Major Exports in Agr. Exp. | 63  |
| % Agr. Exports in Tot.Exports  | 13  |
| Fishery Exports *              | 2   |
| Forestry Exports *             | 1   |



\* Million \$

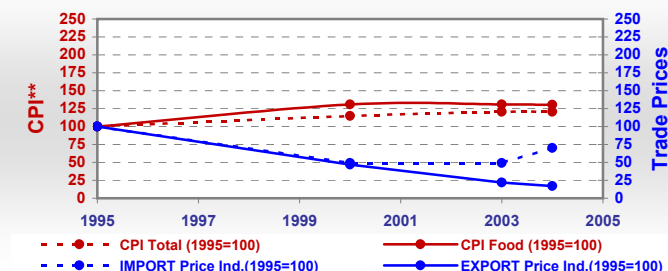
### Trade Partners & Products

|                       |            |            |               |
|-----------------------|------------|------------|---------------|
| Major Import Partner  | -          | -          | -             |
| Major Exports Partner | -          | -          | -             |
| Major Imports         | Cigarettes | Oil, palm  | Cow milk, dry |
| Major Exports         | Goats      | Cigarettes | Asses         |

## Prices

| Producer Prices <sup>01-03</sup> | \$*   | \$Green * |
|----------------------------------|-------|-----------|
| Wheat                            | 191   | 244       |
| Rice                             | 158   | 202       |
| Maize                            | 132   | 168       |
| Soybean                          | -     | -         |
| Coffee                           | -     | -         |
| Tobacco                          | 271   | 346       |
| Cow Milk                         | 258   | 328       |
| Cattle (Live Weight)             | 929   | 1 184     |
| Pig (Live Weight)                | 863   | 1 100     |
| Chicken (Live Weight)            | 1 146 | 1 461     |

### Consumer and Agricultural Trade Price Indices

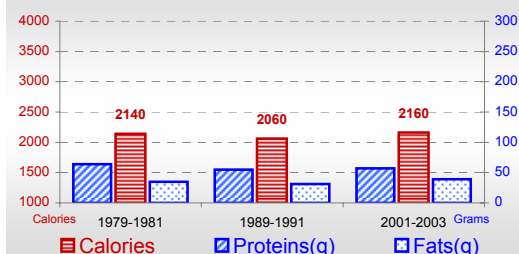


\* per Tonne

\*\* CPI : Consumer Price Index

## Consumption

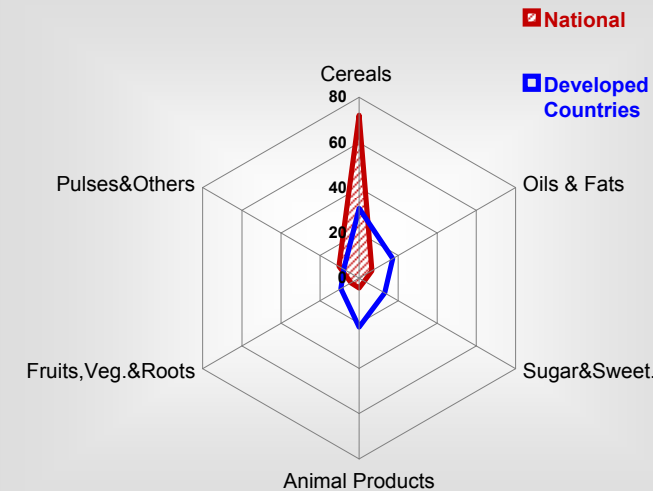
### Per Capita Daily Consumption



### Per Capita Daily Calorie Intake From Selected Food Items <sup>01-03</sup>

|                       |     |
|-----------------------|-----|
| Rice                  | 182 |
| Wheat                 | 47  |
| Maize                 | 33  |
| Sorghum               | 254 |
| Potatoes              | 1   |
| Cassava               | 27  |
| Sugar                 | 58  |
| Soybean Oil           | 0   |
| Palm Oil              | 72  |
| Milk                  | 41  |
| Anim.Fats(Raw&Butter) | 21  |
| Eggs                  | 2   |
| Pigmeat               | 1   |
| Poultry Meat          | 8   |
| Bovine Meat           | 17  |
| Sheep & Goats Meat    | 12  |

### Source of Dietary Energy Consumption % <sup>01-03</sup>



### Food Balance <sup>01-03 (1000Tonnes)</sup>

| Food Groups | Production (+) | Exports (-) | Imports (+) | Stock changes & Other uses (-) | Consumption (=) |
|-------------|----------------|-------------|-------------|--------------------------------|-----------------|
| Cereals     | 3 227          | 2           | 314         | 990                            | 2 551           |
| Veg.oils    | 23             | 1           | 46          | 11                             | 57              |
| Sugar&Sw.   | 22             | 1           | 59          | 11                             | 68              |
| Roots&Tub.  | 136            | -           | 17          | 14                             | 139             |
| Meat        | 131            | -           | -           | 0                              | 131             |
| Milk        | 315            | 1           | 49          | 21                             | 342             |

Time reference=<sup>99-01</sup>:1999-2001, <sup>00</sup>:2000, <sup>02</sup>:2002, <sup>00-02</sup>:2000-2002, <sup>03</sup>:2003, <sup>04</sup>:2004, <sup>ly</sup>:Latest Available Year