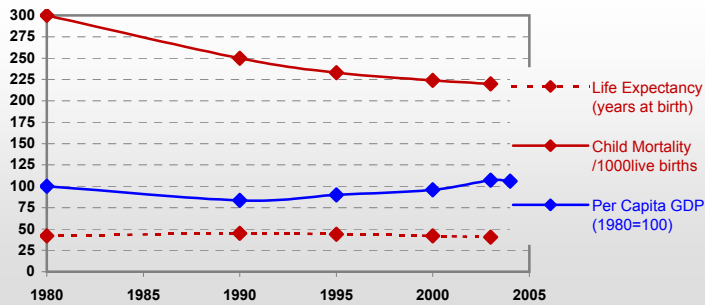


# Mali



## General / Welfare

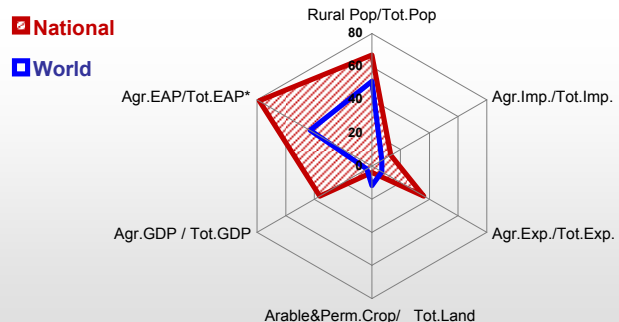
Population <sup>04 *</sup>	13 409
Per Capita GDP <sup>04 **</sup>	232
Agricultural GDP/Ag.Population <sup>04**</sup>	107
Total Exports <sup>04 ****</sup>	1 131
Total Imports <sup>04 ****</sup>	932
Agric. External Assistance <sup>03 ***</sup>	77 195
Food Consumption Inequality (G) <sup>ly</sup>	0.16
Income Inequality (G) <sup>ly</sup>	0.51
Land Inequality (G) <sup>ly</sup>	-
Undernourished Population % <sup>01-03</sup>	28



\* 1000 \*\* \$ \*\*\* 1000 \$ \*\*\*\* Million \$ --- (G) : Gini Coefficient --- GDP at 2000 Constant Prices

## Agriculture In The Economy<sup>ly</sup>

## Resources

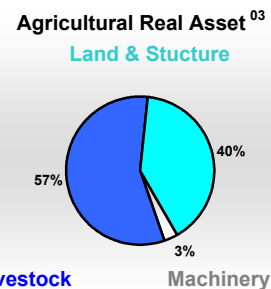
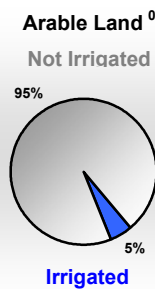
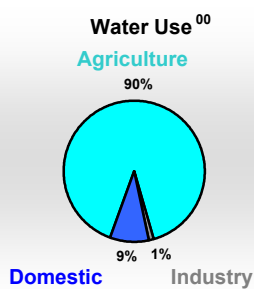
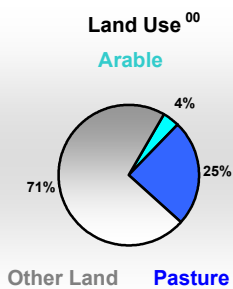


Arable Land <sup>00 *</sup>	4 634
Permanent Crops <sup>00 *</sup>	40
Pasture <sup>00 *</sup>	30 000
Cattle & Buffaloes <sup>04 **</sup>	7 500
Sheeps & Goats <sup>04 **</sup>	20 400
Tractors <sup>03 / *</sup>	1
Harvesters&Threshers <sup>03 / *</sup>	0
Fertilizers Production <sup>02 ***</sup>	-
Fertilizers Consumption <sup>02 ***</sup>	42 000
Rainfall Index <sup>02 (mm)</sup>	536

\* EAP : Economically Active Population

\* 1000ha \*\* 1000heads \*\*\* Tonnes N,P<sub>2</sub>O<sub>5</sub>,K<sub>2</sub>O

## Resources Distribution



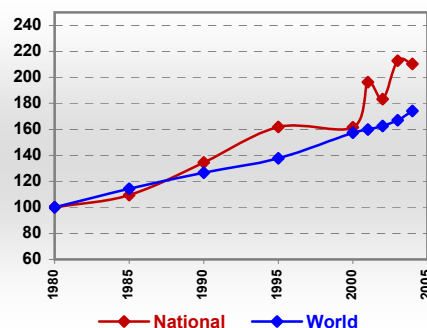
## Production

Agriculture <sup>04 *</sup>		Forestry <sup>04</sup>	
Cereals	2 845	Indust.Roundwood **	413
Meat	247	Wood Fuel **	4 965
Fruits & Vegetables	365	Wood Charcoal *	110
Roots & Tubers	147	Sawn Wood **	13
Pulses	113	Wood Based Panels **	-
Oilseeds (oil equiv.)	104	Wood Pulp *	-
Sugar Crops	360	Paper, Paper Board *	-
Milk	602		
Eggs	10		
Stimulants	0		
Tobacco	1		
Fiber Crops	241		

## Fisheries<sup>04 \*</sup>

Pelagic	-
Freshwater	101
Demersal	-
Molluscs	-

## Agricultural Production Index



\* 1000Tonnes \*\* 1000m<sup>3</sup>

Time reference=<sup>99-01</sup>:1999-2001, <sup>00</sup>:2000, <sup>02</sup>:2002, <sup>00-02</sup>:2000-2002, <sup>03</sup>:2003, <sup>04</sup>:2004, <sup>ly</sup>:Latest Available Year

# Mali

## Trade <sup>04</sup>

Agricultural Imports *	148
% 4 Major Imports in Agr. Imp.	44
% Agr. Imports in Tot. Imports	13
Fishery Imports *	3
Forestry Imports *	5
Agricultural Exports *	336
% 4 Major Exports in Agr. Exp.	93
% Agr. Exports in Tot.Exports	36
Fishery Exports *	0
Forestry Exports *	1

\* Million \$



**Composition of Agricultural Trade %**

- Non Food Products
- Cereals
- Livestock Products
- All Other Food

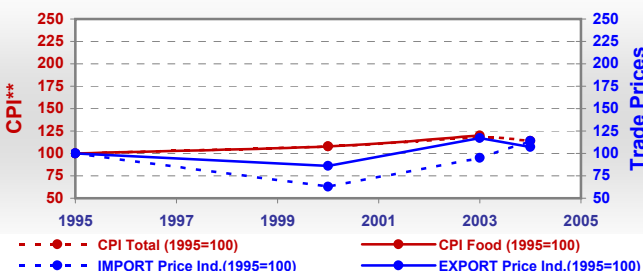
### Trade Partners & Products

Major Import Partner	-	-	-
Major Exports Partner	-	-	-
Major Imports	Food prepared	Food prepared	Cow milk, dry
Major Exports	Cotton lint	Cattle	Sheep

## Prices

Producer Prices <sup>01-03</sup>	\$*	\$Green *
Wheat	175	203
Rice	187	217
Maize	108	127
Soybean	-	-
Coffee	-	-
Tobacco	353	420
Cow Milk	231	267
Cattle (Live Weight)	932	1 088
Pig (Live Weight)	415	489
Chicken (Live Weight)	1 890	2 193

### Consumer and Agricultural Trade Price Indices

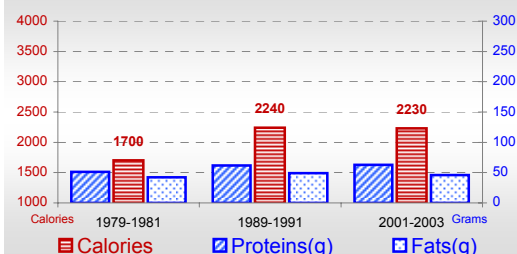


\* per Tonne

\*\* CPI : Consumer Price Index

## Consumption

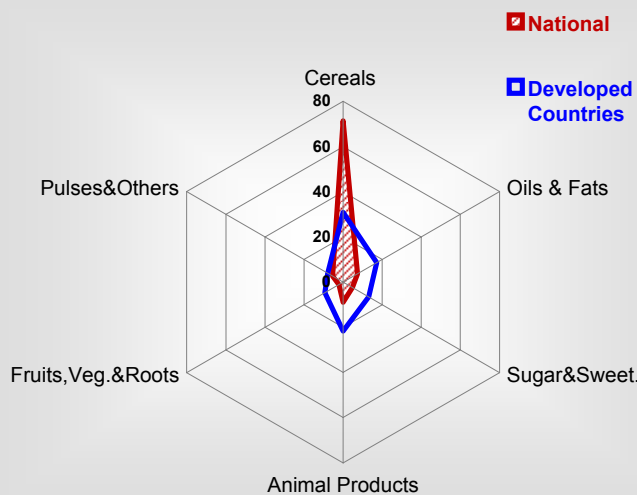
### Per Capita Daily Consumption



### Per Capita Daily Calorie Intake From Selected Food Items <sup>01-03</sup>

Rice	445
Wheat	67
Maize	249
Sorghum	343
Potatoes	0
Cassava	5
Sugar	106
Soybean Oil	1
Palm Oil	10
Milk	98
Anim.Fats(Raw&Butter)	9
Eggs	2
Pigmeat	2
Poultry Meat	8
Bovine Meat	35
Sheep & Goats Meat	28

### Source of Dietary Energy Consumption % <sup>01-03</sup>



### Food Balance <sup>01-03 (1000Tonnes)</sup>

Food Groups	Production (+)	Exports (-)	Imports (+)	Stock changes & Other uses (-)	Consumption (=)
Cereals	2 347	22	208	218	2 315
Veg.oils	83	5	11	6	83
Sugar&Sw.	32	-	94	-13	138
Roots&Tub.	139	2	5	5	136
Meat	235	-	-	0	235
Milk	547	-	45	12	580