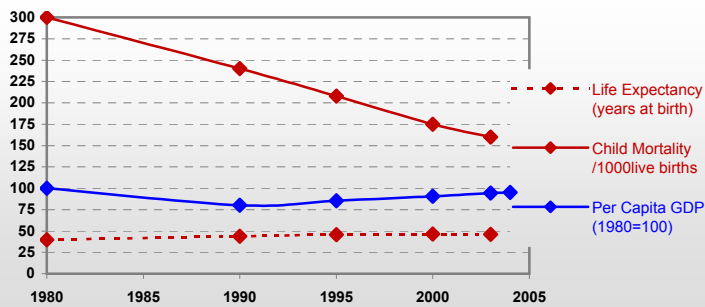


# Guinea



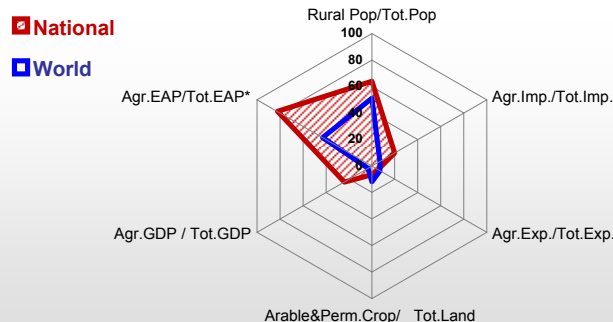
## General / Welfare

Population <sup>04 *</sup>	8 620
Per Capita GDP <sup>04 **</sup>	405
Agricultural GDP/Ag.Population <sup>04**</sup>	118
Total Exports <sup>04 ****</sup>	1 091
Total Imports <sup>04 ****</sup>	955
Agric. External Assistance <sup>03 ***</sup>	35 726
Food Consumption Inequality (G) <sup>ly</sup>	0.17
Income Inequality (G) <sup>ly</sup>	0.40
Land Inequality (G) <sup>ly</sup>	-
Undernourished Population % <sup>01-03</sup>	24



\* 1000 \*\* \$ \*\*\* 1000 \$ \*\*\*\* Million \$ --- (G) : Gini Coefficient --- GDP at 2000 Constant Prices

## Agriculture In The Economy<sup>ly</sup>



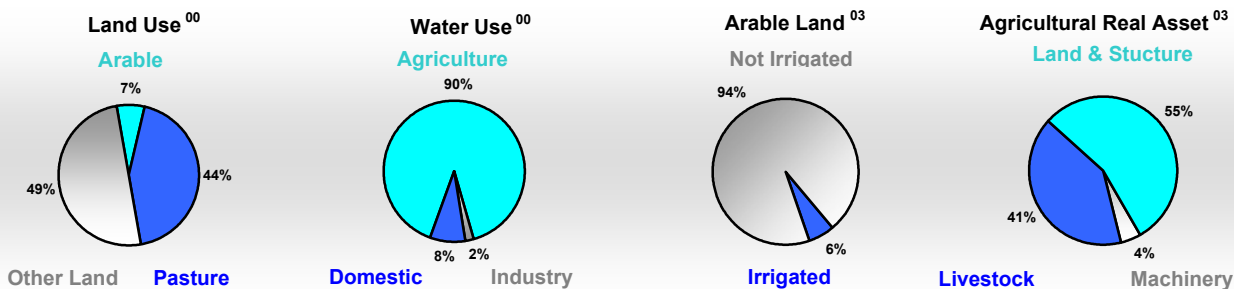
\* EAP : Economically Active Population

## Resources

Arable Land <sup>00 *</sup>	975
Permanent Crops <sup>00 *</sup>	625
Pasture <sup>00 *</sup>	10 700
Cattle & Buffaloes <sup>04 **</sup>	3 285
Sheeps & Goats <sup>04 **</sup>	2 348
Tractors <sup>03 / *</sup>	1
Harvesters&Threshers <sup>03 / *</sup>	0
Fertilizers Production <sup>02 ***</sup>	-
Fertilizers Consumption <sup>02 ***</sup>	3 200
Rainfall Index <sup>02 (mm)</sup>	1 614

\* 1000ha \*\* 1000heads \*\*\* Tonnes N,P<sub>2</sub>O<sub>5</sub>,K<sub>2</sub>O

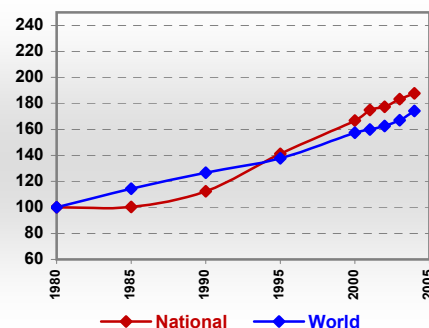
## Resources Distribution



## Production

Agriculture <sup>04 *</sup>		Forestry <sup>04</sup>	
Cereals	1 142	Indust.Roundwood **	651
Meat	56	Wood Fuel **	11 635
Fruits & Vegetables	1 588	Wood Charcoal *	304
Roots & Tubers	1 480	Sawn Wood **	26
Pulses	60	Wood Based Panels **	-
Oilseeds (oil equiv.)	171	Wood Pulp *	-
Sugar Crops	280	Paper, Paper Board *	-
Milk	92	<b>Fisheries<sup>04 *</sup></b>	
Eggs	17	Pelagic	34
Stimulants	23	Freshwater	4
Tobacco	2	Demersal	21
Fiber Crops	15	Molluscs	-

## Agricultural Production Index



\* 1000Tonnes \*\* 1000m<sup>3</sup>

Time reference=<sup>99-01</sup>:1999-2001, <sup>00</sup>:2000, <sup>02</sup>:2002, <sup>00-02</sup>:2000-2002, <sup>03</sup>:2003, <sup>04</sup>:2004, <sup>ly</sup>:Latest Available Year

# Guinea

## Trade <sup>04</sup>

Agricultural Imports *	216
% 4 Major Imports in Agr. Imp.	45
% Agr. Imports in Tot. Imports	20
Fishery Imports *	6
Forestry Imports *	3
Agricultural Exports *	51
% 4 Major Exports in Agr. Exp.	86
% Agr. Exports in Tot.Exports	5
Fishery Exports *	6
Forestry Exports *	8



\* Million \$

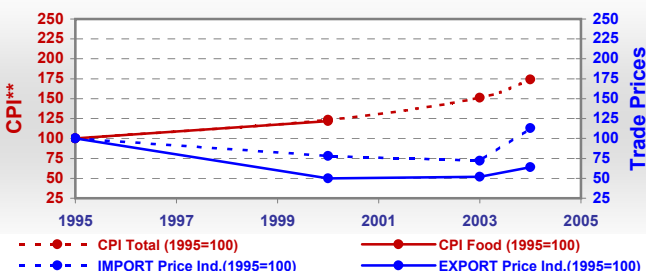
### Trade Partners & Products

Major Import Partner	-	-	-
Major Exports Partner	-	-	-
Major Imports	Cigarettes	Rice	Food prepared
Major Exports	Coffee, green	Rubber, dry	Cattle

## Prices

Producer Prices <sup>01-03</sup>	\$*	\$Green *
Wheat	-	-
Rice	365	288
Maize	182	144
Soybean	-	-
Coffee	436	345
Tobacco	2 724	2 151
Cow Milk	585	462
Cattle (Live Weight)	563	445
Pig (Live Weight)	387	306
Chicken (Live Weight)	1 483	1 172

### Consumer and Agricultural Trade Price Indices

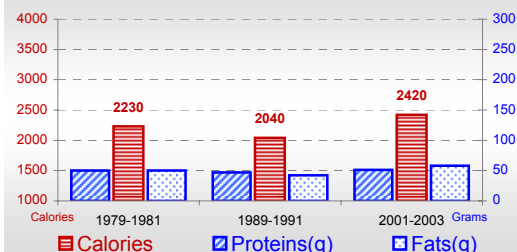


\* per Tonne

\*\* CPI : Consumer Price Index

## Consumption

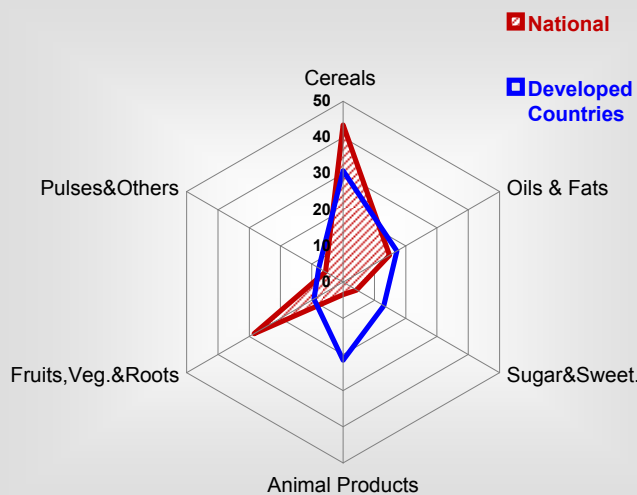
### Per Capita Daily Consumption



### Per Capita Daily Calorie Intake From Selected Food Items <sup>01-03</sup>

Rice	777
Wheat	93
Maize	87
Sorghum	4
Potatoes	0
Cassava	364
Sugar	103
Soybean Oil	23
Palm Oil	131
Milk	23
Anim.Fats(Raw&Butter)	5
Eggs	5
Pigmeat	2
Poultry Meat	2
Bovine Meat	22
Sheep & Goats Meat	4

### Source of Dietary Energy Consumption % <sup>01-03</sup>



### Food Balance <sup>01-03</sup> (1000Tonnes)

Food Groups	Production (+)	Exports (-)	Imports (+)	Stock changes & Other uses (-)	Consumption (=)
Cereals	814	11	443	291	955
Veg.oils	113	1	34	24	122
Sugar&Sw.	26	16	90	9	90
Roots&Tub.	1 324	-	1	146	1 178
Meat	53	-	2	0	55
Milk	86	1	20	4	101