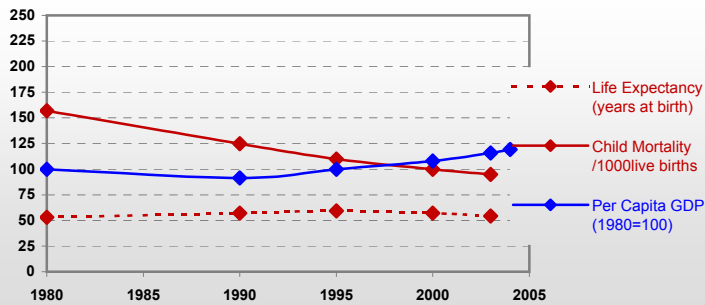


Ghana



General / Welfare

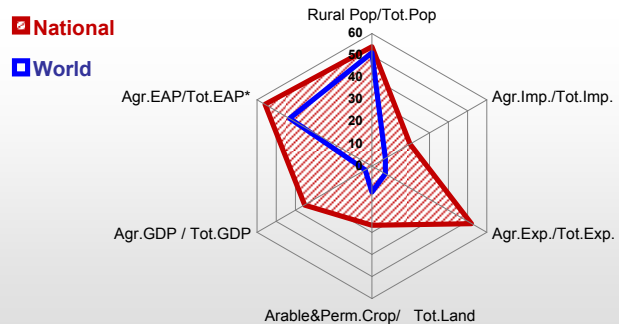
Population ^{04 *}	21 377
Per Capita GDP ^{04 **}	281
Agricultural GDP/Ag.Population ^{04**}	179
Total Exports ^{04 ****}	5 214
Total Imports ^{04 ****}	2 327
Agric. External Assistance ^{03 ***}	82 367
Food Consumption Inequality (G) ^{ly}	0.13
Income Inequality (G) ^{ly}	0.41
Land Inequality (G) ^{ly}	-
Undernourished Population % ⁰¹⁻⁰³	12



* 1000 ** \$ *** 1000 \$ **** Million \$ --- (G) : Gini Coefficient --- GDP at 2000 Constant Prices

Agriculture In The Economy^{ly}

Resources

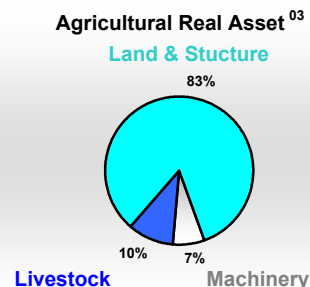
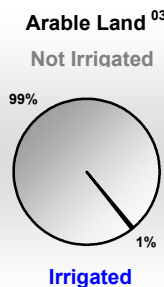
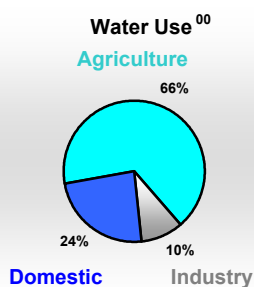
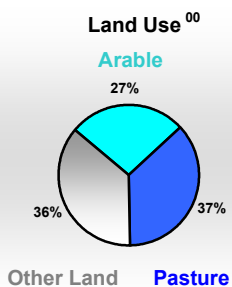


Arable Land ^{00 *}	3 950
Permanent Crops ^{00 *}	2 150
Pasture ^{00 *}	8 350
Cattle & Buffaloes ^{04 **}	1 365
Sheeps & Goats ^{04 **}	6 707
Tractors ^{03 / *}	1
Harvesters&Threshers ^{03 / *}	0
Fertilizers Production ^{02 ***}	-
Fertilizers Consumption ^{02 ***}	31 030
Rainfall Index ^{02 (mm)}	1 112

* EAP : Economically Active Population

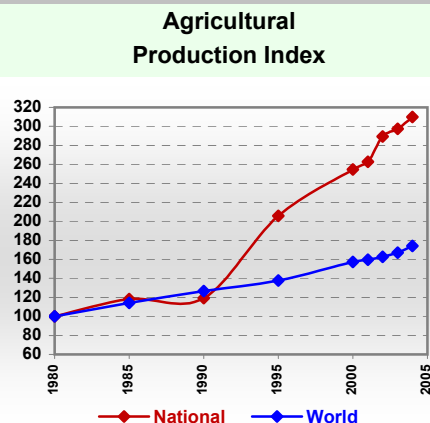
* 1000ha ** 1000heads *** Tonnes N,P₂O₅,K₂O

Resources Distribution



Production

Agriculture ^{04 *}		Forestry ⁰⁴	
Cereals	1 943	Indust.Roundwood **	1 350
Meat	177	Wood Fuel **	20 678
Fruits & Vegetables	3 476	Wood Charcoal *	752
Roots & Tubers	15 521	Sawn Wood **	480
Pulses	15	Wood Based Panels **	435
Oilseeds (oil equiv.)	315	Wood Pulp *	-
Sugar Crops	140	Paper, Paper Board *	-
Milk	35	Fisheries^{04 *}	
Eggs	25	Pelagic	263
Stimulants	738	Freshwater	81
Tobacco	1	Demersal	45
Fiber Crops	8	Molluscs	-



* 1000Tonnes ** 1000m³

Time reference=⁹⁹⁻⁰¹:1999-2001, ⁰⁰:2000, ⁰²:2002, ⁰⁰⁻⁰²:2000-2002, ⁰³:2003, ⁰⁴:2004, ^{ly}:Latest Available Year

Ghana

Trade ⁰⁴

Agricultural Imports *	1 038
% 4 Major Imports in Agr. Imp.	52
% Agr. Imports in Tot. Imports	20
Fishery Imports *	75
Forestry Imports *	70
Agricultural Exports *	1 212
% 4 Major Exports in Agr. Exp.	83
% Agr. Exports in Tot.Exports	52
Fishery Exports *	83
Forestry Exports *	175



* Million \$

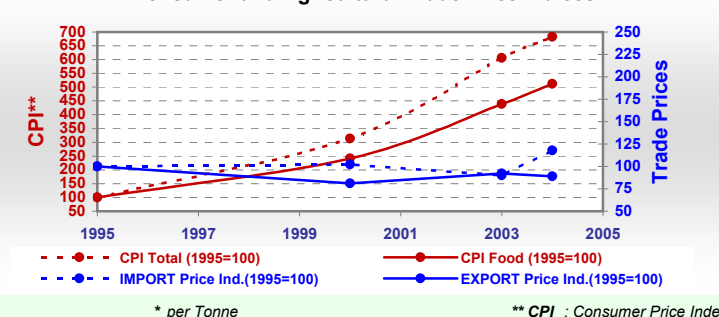
Trade Partners & Products

Major Import Partner	-	-	-
Major Exports Partner	-	-	-
Major Imports	Cotton lint	Rice	Sugar, refined
Major Exports	Cocoa beans	Sugar, refined	Pineapples

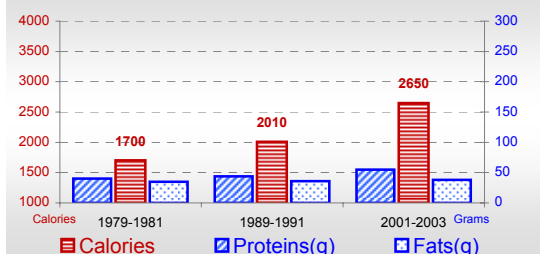
Prices

Producer Prices ⁰¹⁻⁰³	\$*	\$Green *
Wheat	-	-
Rice	292	366
Maize	158	200
Soybean	-	-
Coffee	1 024	1 321
Tobacco	1 077	1 389
Cow Milk	117	150
Cattle (Live Weight)	511	659
Pig (Live Weight)	1 010	1 288
Chicken (Live Weight)	1 322	1 674

Consumer and Agricultural Trade Price Indices



Per Capita Daily Consumption

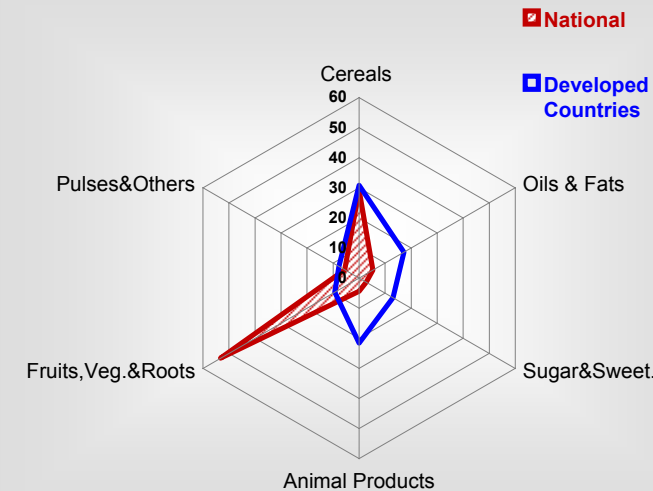


Per Capita Daily Calorie Intake From Selected Food Items ⁰¹⁻⁰³

Rice	217
Wheat	87
Maize	343
Sorghum	75
Potatoes	1
Cassava	642
Sugar	69
Soybean Oil	6
Palm Oil	65
Milk	11
Anim.Fats(Raw&Butter)	4
Eggs	3
Pigmeat	6
Poultry Meat	5
Bovine Meat	7
Sheep & Goats Meat	4

Consumption

Source of Dietary Energy Consumption % ⁰¹⁻⁰³



Food Balance ^{01-03 (1000Tonnes)}

Food Groups	Production (+)	Exports (-)	Imports (+)	Stock changes & Other uses (-)	Consumption (=)
Cereals	1 853	19	656	632	1 858
Veg.oils	228	55	79	132	119
Sugar&Sw.	-	103	328	80	145
Roots&Tub.	15 273	19	12	6 991	8 274
Meat	169	1	35	0	203
Milk	35	3	127	2	157