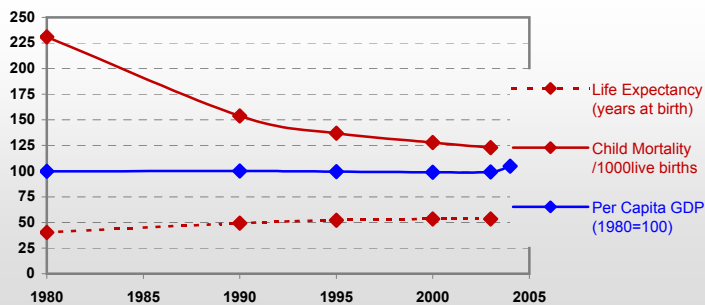


# Gambia



## General / Welfare

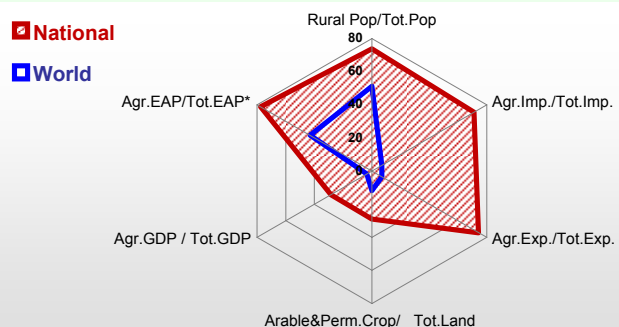
Population <sup>04 *</sup>	1 462
Per Capita GDP <sup>04 **</sup>	341
Agricultural GDP/Ag.Population <sup>04**</sup>	125
Total Exports <sup>04 ****</sup>	230
Total Imports <sup>04 ****</sup>	30
Agric. External Assistance <sup>03 ***</sup>	2 722
Food Consumption Inequality (G) <sup>ly</sup>	0.17
Income Inequality (G) <sup>ly</sup>	0.48
Land Inequality (G) <sup>ly</sup>	-
Undernourished Population % <sup>01-03</sup>	27



\* 1000 \*\* \$ \*\*\* 1000 \$ \*\*\*\* Million \$ --- (G) : Gini Coefficient --- GDP at 2000 Constant Prices

## Agriculture In The Economy<sup>ly</sup>

## Resources

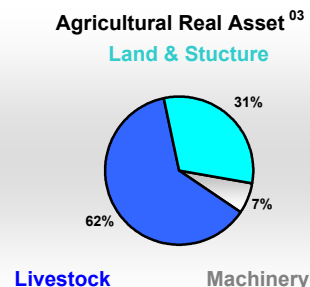
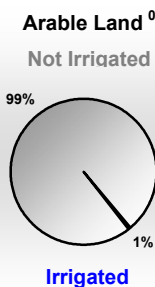
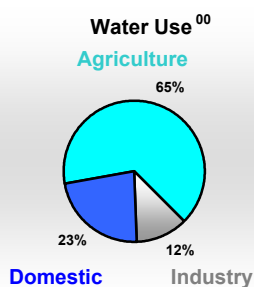
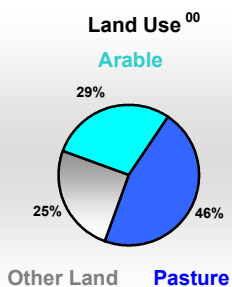


Arable Land <sup>00 *</sup>	285
Permanent Crops <sup>00 *</sup>	5
Pasture <sup>00 *</sup>	459
Cattle & Buffaloes <sup>04 **</sup>	328
Sheeps & Goats <sup>04 **</sup>	412
Tractors <sup>03 / *</sup>	0
Harvesters&Threshers <sup>03 / *</sup>	0
Fertilizers Production <sup>02 ***</sup>	-
Fertilizers Consumption <sup>02 ***</sup>	800
Rainfall Index <sup>02 (mm)</sup>	598

\* EAP : Economically Active Population

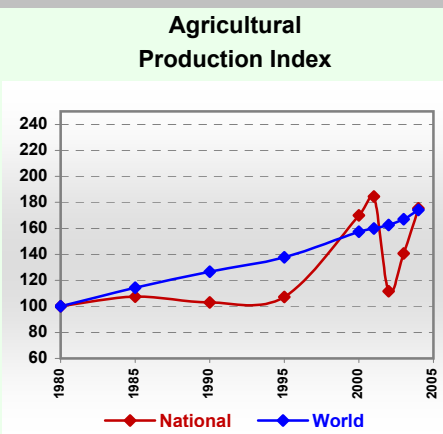
\* 1000ha \*\* 1000heads \*\*\* Tonnes N,P<sub>2</sub>O<sub>5</sub>,K<sub>2</sub>O

## Resources Distribution



## Production

Agriculture <sup>04 *</sup>		Forestry <sup>04</sup>	
Cereals	213	Indust.Roundwood **	113
Meat	7	Wood Fuel **	638
Fruits & Vegetables	13	Wood Charcoal *	51
Roots & Tubers	8	Sawn Wood **	1
Pulses	3	Wood Based Panels **	-
Oilseeds (oil equiv.)	45	Wood Pulp *	-
Sugar Crops	-	Paper, Paper Board *	-
Milk	8	<b>Fisheries<sup>04 *</sup></b>	
Eggs	1	Pelagic	19
Stimulants	-	Freshwater	3
Tobacco	-	Demersal	10
Fiber Crops	0	Molluscs	-



\* 1000Tonnes \*\* 1000m<sup>3</sup>

Time reference=<sup>99-01</sup>:1999-2001, <sup>00</sup>:2000, <sup>02</sup>:2002, <sup>00-02</sup>:2000-2002, <sup>03</sup>:2003, <sup>04</sup>:2004, <sup>ly</sup>:Latest Available Year

# Gambia

## Trade <sup>04</sup>

Agricultural Imports *	163
% 4 Major Imports in Agr. Imp.	43
% Agr. Imports in Tot. Imports	71
Fishery Imports *	1
Forestry Imports *	2
Agricultural Exports *	22
% 4 Major Exports in Agr. Exp.	85
% Agr. Exports in Tot.Exports	74
Fishery Exports *	1
Forestry Exports *	1



\* Million \$

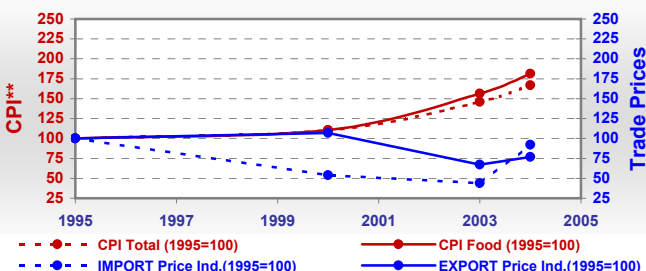
### Trade Partners & Products

Major Import Partner	-	-	-
Major Exports Partner	-	-	-
Major Imports	Sugar, refined	Flour, wheat	Food prepared
Major Exports	Sugar, refined	Oil, groundnut	Groundnuts, shell

## Prices

Producer Prices <sup>01-03</sup>	\$*	\$Green *
Wheat	-	-
Rice	129	92
Maize	222	169
Soybean	-	-
Coffee	-	-
Tobacco	-	-
Cow Milk	330	242
Cattle (Live Weight)	1 332	976
Pig (Live Weight)	852	624
Chicken (Live Weight)	2 385	1 770

### Consumer and Agricultural Trade Price Indices

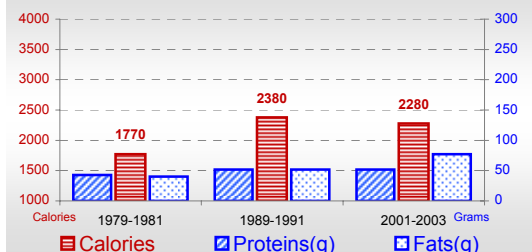


\* per Tonne

\*\* CPI : Consumer Price Index

## Consumption

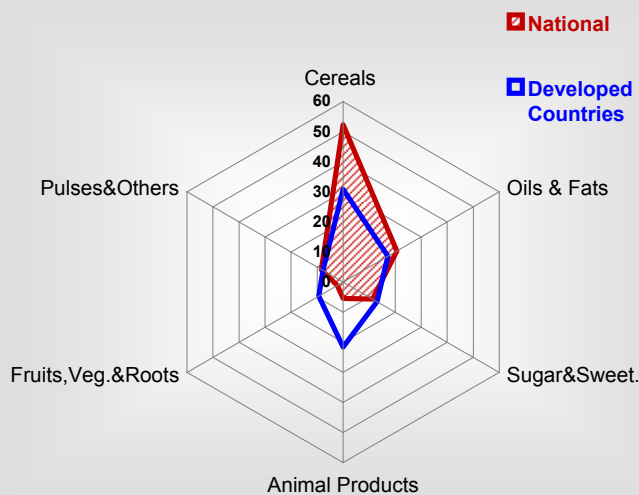
### Per Capita Daily Consumption



### Per Capita Daily Calorie Intake From Selected Food Items <sup>01-03</sup>

Rice	407
Wheat	184
Maize	65
Sorghum	118
Potatoes	6
Cassava	16
Sugar	251
Soybean Oil	228
Palm Oil	88
Milk	45
Anim.Fats(Raw&Butter)	5
Eggs	4
Pigmeat	2
Poultry Meat	4
Bovine Meat	12
Sheep & Goats Meat	4

### Source of Dietary Energy Consumption % <sup>01-03</sup>



### Food Balance <sup>01-03 (1000Tonnes)</sup>

Food Groups	Production (+)	Exports (-)	Imports (+)	Stock changes & Other uses (-)	Consumption (=)
Cereals	162	-	108	78	191
Veg.oils	22	11	40	24	27
Sugar&Sw.	-	-	77	40	37
Roots&Tub.	8	-	7	0	14
Meat	7	-	1	0	7
Milk	8	-	32	0	39

Time reference=<sup>99-01</sup>:1999-2001, <sup>00</sup>:2000, <sup>02</sup>:2002, <sup>00-02</sup>:2000-2002, <sup>03</sup>:2003, <sup>04</sup>:2004, <sup>ly</sup>:Latest Available Year