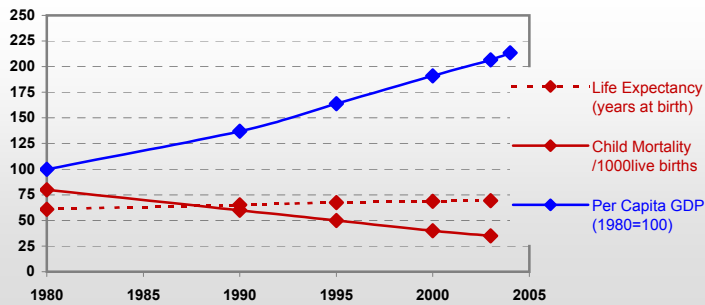


# Cape Verde



## General / Welfare

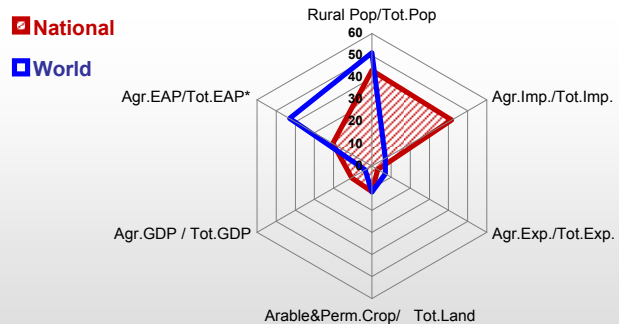
Population <sup>04</sup> *	473
Per Capita GDP <sup>04</sup> **	1 351
Agricultural GDP/Ag.Population <sup>04</sup> ***	708
Total Exports <sup>04</sup> ****	270
Total Imports <sup>04</sup> ****	11
Agric. External Assistance <sup>03</sup> ***	13 326
Food Consumption Inequality (G) <sup>ly</sup>	0.15
Income Inequality (G) <sup>ly</sup>	-
Land Inequality (G) <sup>ly</sup>	-
Undernourished Population % <sup>01-03</sup>	-



\* 1000 \*\* \$ \*\*\* 1000 \$ \*\*\*\* Million \$ --- (G) : Gini Coefficient --- GDP at 2000 Constant Prices

## Agriculture In The Economy <sup>ly</sup>

## Resources

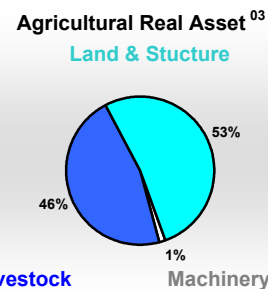
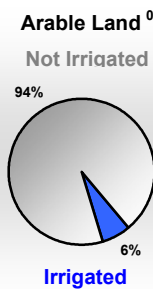
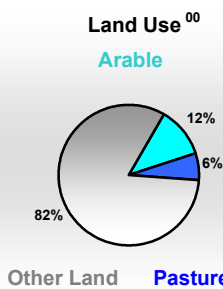


Arable Land <sup>00</sup> *	44
Permanent Crops <sup>00</sup> *	3
Pasture <sup>00</sup> *	25
Cattle & Buffaloes <sup>04</sup> **	23
Sheeps & Goats <sup>04</sup> **	122
Tractors <sup>03</sup> / *	0
Harvesters&Threshers <sup>03</sup> / *	-
Fertilizers Production <sup>02</sup> ***	-
Fertilizers Consumption <sup>02</sup> ***	220
Rainfall Index <sup>02</sup> (mm)	144

\* EAP : Economically Active Population ---

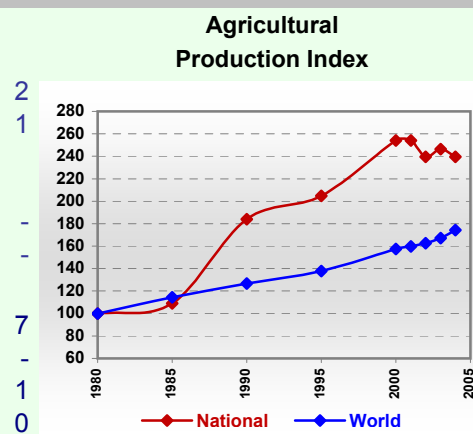
\* 1000ha \*\* 1000heads \*\*\* Tonnes N,P<sub>2</sub>O<sub>5</sub>,K<sub>2</sub>O

## Resources Distribution



## Production

Agriculture <sup>04</sup> *		Forestry <sup>04</sup>		Fisheries <sup>04</sup> *
Cereals	4	Indust.Roundwood **		
Meat	9	Wood Fuel **		
Fruits & Vegetables	31	Wood Charcoal *		
Roots & Tubers	11	Sawn Wood **		
Pulses	5	Wood Based Panels **		
Oilseeds (oil equiv.)	1	Wood Pulp *		
Sugar Crops	14	Paper, Paper Board *		
Milk	11			
Eggs	2	Pelagic		
Stimulants	-	Freshwater		
Tobacco	-	Demersal		
Fiber Crops	-	Molluscs		



\* 1000Tonnes \*\* 1000m<sup>3</sup>

# Cape Verde

## Trade <sup>04</sup>

<b>Agricultural Imports *</b>	113
% 4 Major Imports in Agr. Imp.	30
% Agr. Imports in Tot. Imports	42
<b>Fishery Imports *</b>	1
<b>Forestry Imports *</b>	5
<b>Agricultural Exports *</b>	0
% 4 Major Exports in Agr. Exp.	98
% Agr. Exports in Tot.Exports	3
<b>Fishery Exports *</b>	1
<b>Forestry Exports *</b>	0



\* Million \$

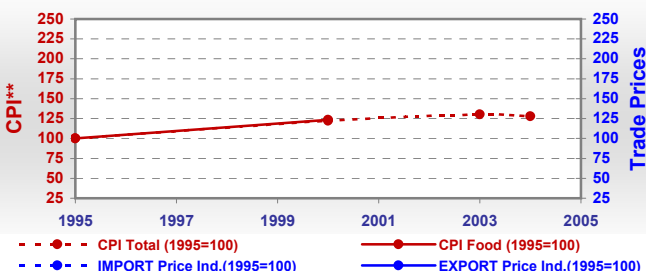
### Trade Partners & Products

<b>Major Import Partner</b>	-	-	-
<b>Major Exports Partner</b>	-	-	-
<b>Major Imports</b>	Cow milk, dry	Food prepared	Beer, barley
<b>Major Exports</b>	Bevs, dis alcohol	Pastry	Coffee, green

## Prices

<b>Producer Prices <sup>01-03</sup></b>	\$*	\$Green *
Wheat	-	-
Rice	-	-
Maize	-	141
Soybean	-	-
Coffee	-	-
Tobacco	-	-
Cow Milk	-	335
Cattle (Live Weight)	-	1 501
Pig (Live Weight)	-	1 165
Chicken (Live Weight)	-	982

### Consumer and Agricultural Trade Price Indices

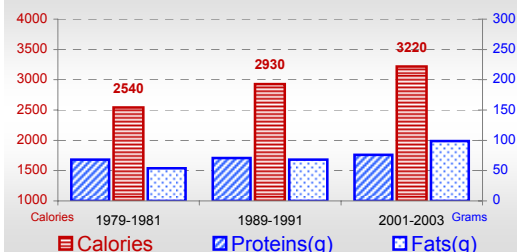


\* per Tonne

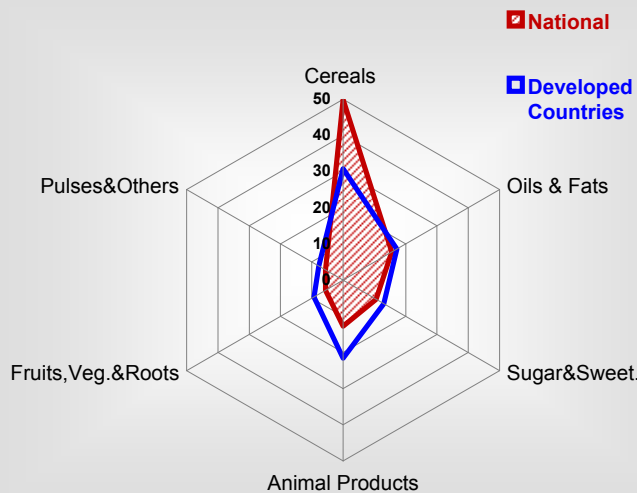
\*\* CPI : Consumer Price Index

## Consumption

### Per Capita Daily Consumption



### Source of Dietary Energy Consumption % <sup>01-03</sup>



### Per Capita Daily Calorie Intake From Selected Food Items <sup>01-03</sup>

Rice	510
Wheat	392
Maize	702
Sorghum	-
Potatoes	49
Cassava	19
Sugar	319
Soybean Oil	331
Palm Oil	11
Milk	154
Anim.Fats(Raw&Butter)	61
Eggs	13
Pigmeat	153
Poultry Meat	24
Bovine Meat	8
Sheep & Goats Meat	4

### Food Balance <sup>01-03 (1000Tonnes)</sup>

Food Groups	Production (+)	Exports (-)	Imports (+)	Stock changes & Other uses (-)	Consumption (=)
Cereals	12	-	77	8	81
Veg.oils	-	-	8	0	8
Sugar&Sw.	-	-	16	-1	17
Roots&Tub.	10	-	10	2	19
Meat	8	-	5	0	13
Milk	10	-	29	0	39

Time reference=<sup>99-01</sup>:1999-2001, <sup>00</sup>:2000, <sup>02</sup>:2002, <sup>00-02</sup>:2000-2002, <sup>03</sup>:2003, <sup>04</sup>:2004, <sup>ly</sup>:Latest Available Year