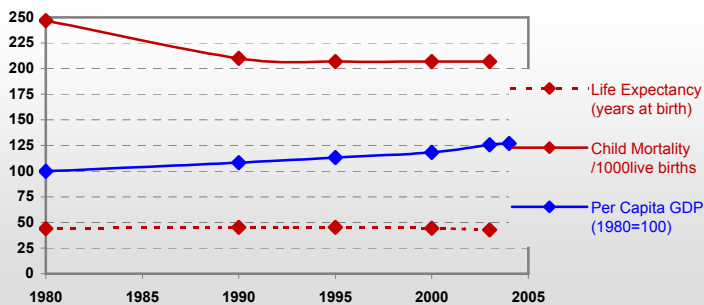


Burkina Faso



General / Welfare

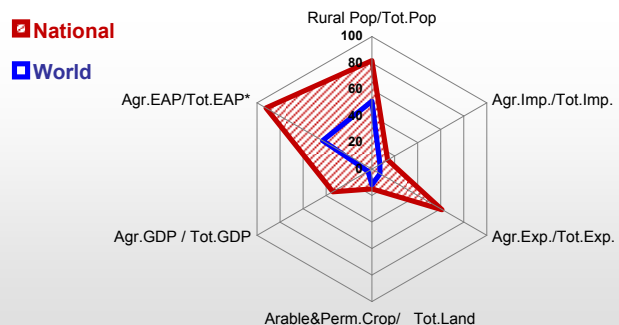
Population ^{04 *}	13 393
Per Capita GDP ^{04 **}	238
Agricultural GDP/Ag.Population ^{04**}	88
Total Exports ^{04 ****}	1 110
Total Imports ^{04 ****}	514
Agric. External Assistance ^{03 ***}	65 613
Food Consumption Inequality (G) ^{ly}	0.17
Income Inequality (G) ^{ly}	0.48
Land Inequality (G) ^{ly}	-
Undernourished Population % ⁰¹⁻⁰³	17



* 1000 ** \$ *** 1000 \$ **** Million \$ --- (G) : Gini Coefficient --- GDP at 2000 Constant Prices

Agriculture In The Economy^{ly}

Resources

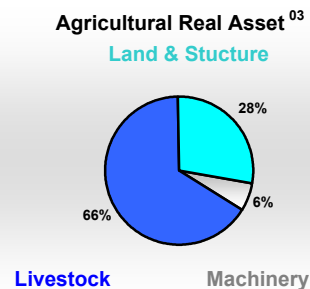
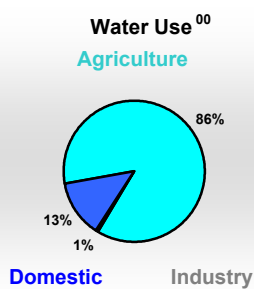
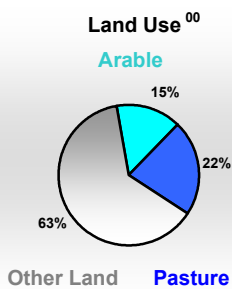


Arable Land ^{00 *}	4 040
Permanent Crops ^{00 *}	60
Pasture ^{00 *}	6 000
Cattle & Buffaloes ^{04 **}	7 653
Sheeps & Goats ^{04 **}	17 221
Tractors ^{03 / *}	0
Harvesters&Threshers ^{03 / *}	-
Fertilizers Production ^{02 ***}	-
Fertilizers Consumption ^{02 ***}	1 671
Rainfall Index ^{02 (mm)}	608

* EAP : Economically Active Population ---

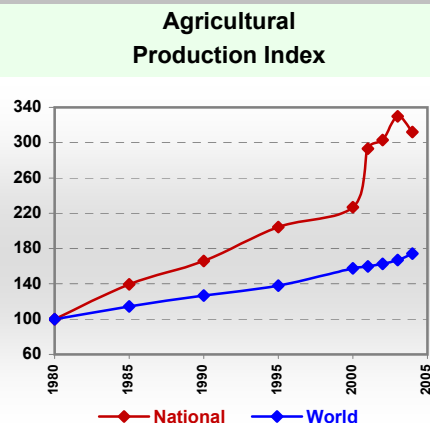
* 1000ha ** 1000heads *** Tonnes N,P₂O₅,K₂O

Resources Distribution



Production

Agriculture ^{04 *}		Forestry ⁰⁴	
Cereals	2 902	Indust.Roundwood **	1 183
Meat	212	Wood Fuel **	11 727
Fruits & Vegetables	310	Wood Charcoal *	496
Roots & Tubers	134	Sawn Wood **	2
Pulses	329	Wood Based Panels **	-
Oilseeds (oil equiv.)	152	Wood Pulp *	-
Sugar Crops	450	Paper, Paper Board *	-
Milk	206	Fisheries^{04 *}	
Eggs	44	Pelagic	-
Stimulants	-	Freshwater	9
Tobacco	1	Demersal	-
Fiber Crops	210	Molluscs	-



* 1000Tonnes ** 1000m³

Burkina Faso

Trade ⁰⁴

Agricultural Imports *	152
% 4 Major Imports in Agr. Imp.	53
% Agr. Imports in Tot. Imports	14
Fishery Imports *	2
Forestry Imports *	12
Agricultural Exports *	314
% 4 Major Exports in Agr. Exp.	91
% Agr. Exports in Tot.Exports	61
Fishery Exports *	-
Forestry Exports *	2

* Million \$



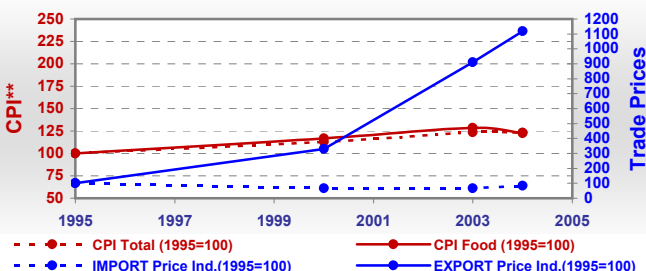
Trade Partners & Products

Major Import Partner	Côte d'Ivoire	Thailand	France
Major Exports Partner	Ghana	France	Niger
Major Imports	Tobacco products	Rice	Rice, broken
Major Exports	Cotton lint	Sesame seed	Cigarettes

Prices

Producer Prices ⁰¹⁻⁰³	\$*	\$Green *
Wheat	-	-
Rice	203	257
Maize	140	177
Soybean	144	181
Coffee	-	-
Tobacco	920	1 145
Cow Milk	254	320
Cattle (Live Weight)	915	1 155
Pig (Live Weight)	860	1 084
Chicken (Live Weight)	1 490	1 879

Consumer and Agricultural Trade Price Indices

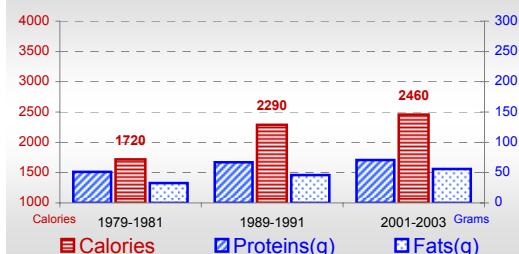


* per Tonne

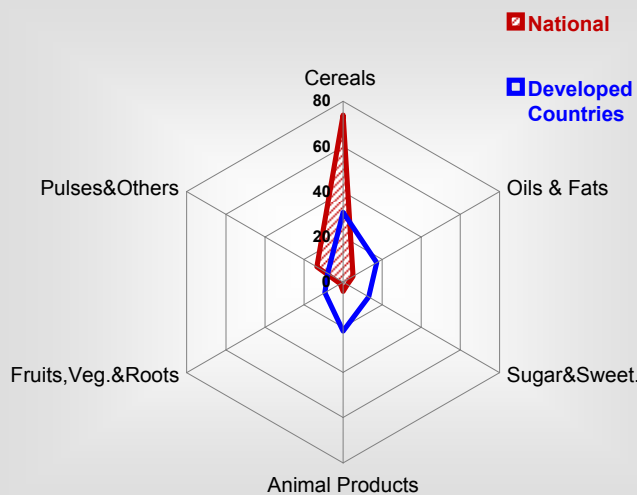
** CPI : Consumer Price Index

Consumption

Per Capita Daily Consumption



Source of Dietary Energy Consumption % ⁰¹⁻⁰³



Per Capita Daily Calorie Intake From Selected Food Items ⁰¹⁻⁰³

Rice	185
Wheat	31
Maize	336
Sorghum	699
Potatoes	0
Cassava	1
Sugar	53
Soybean Oil	1
Palm Oil	18
Milk	37
Anim.Fats(Raw&Butter)	10
Eggs	3
Pigmeat	6
Poultry Meat	7
Bovine Meat	22
Sheep & Goats Meat	15

Food Balance

01-03 (1000Tonnes)

Food Groups	Production (+)	Exports (-)	Imports (+)	Stock changes & Other uses (-)	Consumption (=)
Cereals	3 231	42	295	714	2 770
Veg.oils	56	6	18	7	60
Sugar&Sw.	38	8	38	0	69
Roots&Tub.	82	-	1	8	75
Meat	137	-	-	0	137
Milk	234	3	38	12	257

Time reference=⁹⁹⁻⁰¹:1999-2001, ⁰⁰:2000, ⁰²:2002, ⁰⁰⁻⁰²:2000-2002, ⁰³:2003, ⁰⁴:2004, ^{ly}:Latest Available Year